

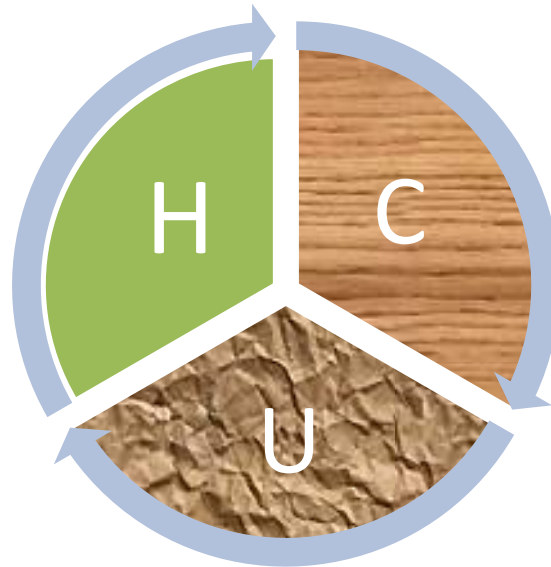


HYDROCARBON UNIT

Energy and Mineral Resources Division

Gas Production & Depletion And Coal Production

May 2019



Gas Reserve & Production at a glance

Gas Initially in Place (GIIP)	:	35,796.19 Bcf
Recoverable (2P)	:	28,685.40 Bcf
Cumulative Production as of May 2019	:	16,856.28 Bcf
Remaining Reserve up to May 2019	:	11,829.12 Bcf
Gas Production in May 2019	:	81.55 Bcf
National Oil Company (NOC's) production in May 2019	:	31.27 Bcf
International Oil Company (IOC's) production in May 2019	:	50.27 Bcf
No. of National Oil Company (NOC's) in May 2019	:	3 (BGFCL, BAPEX, SGFL)
No. of International Oil Company (IOC's) in May 2019	:	2 (Chevron, Tullow)
Total gas fields of National Oil Company(NOC) in May 2019	:	21
Total gas fields of International Oil Company(IOC) in May 2019	:	5
Total gas wells of National Oil Company(NOC) in May 2019	:	116
Total gas wells of International Oil Company(IOC) in May 2019	:	60
No. of National Oil Company (NOC's) gas production well in May 2019	:	67
No. of International Oil Company (IOC's) gas production well in May 2019	:	44
No. of National Oil company(NOC's) suspended well in May 2019	:	49
No. of International Oil company(IOC's) suspended well in May 2019	:	16
Total LNG Import in May 2019	:	17.40 Bcf
Cumulative LNG Import from August 2018	:	99.33 Bcf

Executive Summary of May 2019

Total gas and condensate Production in May 2019 were 81.55 Bcf and 339,517.23 Bbl. In the previous month i.e. April 2019, gas and condensate production was 78.59 Bcf and 343,791 Bbl and in the same month of the previous year i.e. May 2018, total gas and condensate production was 83.02 Bcf and 359,181 Bbl respectively. The National Oil Companies (NOC's) and International Oil Companies (IOC's) Produced 31.27 Bcf and 50.27 Bcf gas respectively in May 2019. During the previous month i.e. April 2019 gas production by the National Oil Companies (NOC's) and International Oil Companies (IOC's) were 30.70 Bcf and 47.89 Bcf respectively. In the month of May 2019 Bibiyana gas field Produced 40.49 Bcf gas and it ranked top among the gas producers. It is noted that Bibiyana gas field Produced 38.50 Bcf in April 2019. Average production from the field during the month of May 2019 was 1306 Mmcfd.

During the month of May 2019 total production of condensate was 339,517.23 Bbl compared to 343,791.10 Bbl in the previous month i.e. April 2019. Bibiyana gas field Produced 277795.70 Bbl condensate and ranked top while Jalalabad ranked 2nd by producing 26805.34 Bbl.

In the month of May 2019 total coal production was 136,004.31 Ton. In the previous month i.e. April 2019 total coal production was 97,897.76 Ton. It indicates that 38,106.55 Ton more Coal was produced compared to previous month.

Total LNG import in May 2019 was 17.40 Bcf. As a result, cumulative LNG import stands on 99.33 Bcf from August 2018.

Table of Contents

Gas Report	Page No.
Summary	1
summary of Reserve and Production	2
Production comparison between April 2019 & May 2019	3
Probable Yearwise Production of GAS	4
Probable Year wise Remaining GAS	5
Production per well & production reserve ratio	6
Monthly Production by Fields & Wells up to May 2019	7-14
Monthly Condensate Production by Fields up to May 2019	15-16
Monthly Water Production by Fields from May 2019	17-18
Conditions of Field and Well up to May 2019	19-23
Chart	
Well-wise Production of All fields in 2017-18	24
Reserve, Production and Remaining Reserve as of May 2019	25
Daily Average Gas Production from January 2012 to May 2019	26
Field wise Daily Average Production as of May 2019	27
Well wise Daily Average Production-BGFCL as of May 2019	28
Well wise Daily Average Production-BAPEX and SGFL, May 2019	29
Well wise Daily Average Production-IOC and JVA, May 2019	30
Comparison of Field wise Daily Avg Gas Production between April 19 & May 19	31
Daily Average Production by Operator, May 2019	32
Comparison of Operator wise daily avg Production between April 19 & May 19	33
Daily Average Production – National vs IOC’s, May 2019	34
Comparison of daily avg Gas Production- National vs IOC’s between April 19 & May 19	35
Daily Average Production IOC’s and JVA, May 2019	36
Monthly Condensate Production, May 2019	37
Coal Report	
Summary	38-39
Barapukuria Coal Mine-MPM and P Contract (BCMCL)	40
Barapukuria Coal Mine Day wise Data Graph for May 2019	41

Summary of Reserve, Production & Import As of 31 May 2019

Gas Initially Place (Proven + Probable)	35,796.19 Bcf	35.80 Tcf
Recoverable (Proven + Probable)	28,685.40 Bcf	28.69 Tcf
Gas Production in May 2019	81.55 Bcf	0.08 Tcf
Cumulative Gas Production as of May 2019	16,856.28 Bcf	16.86 Tcf
Remaining Reserve	11,829.12 Bcf	11.83 Tcf

NOTE: Reserve figure based on "Updated Report on Bangladesh Gas Reserve Estimation 2010", prepared by Gustavson Associates LLC, USA

Total LNG Import in May 2019	17.40 Bcf	0.02 Tcf
Cumulative LNG Import from August 2018	99.33 Bcf	0.10 Tcf

Summary of Reserve and Production

(As of May 2019)

Gas Bcf



Sl No.	Field	2P	GIIP	2P Reserve	Gas Prod. In May '19	Cum. Gas Production	Remaining Reserve	Cum. Condensate Production
1	Begumganj		47.0	33.0	0.2	2.4	30.6	1
2	Shahbazzpur		415.0	261.0	1.9	66.0	195.0	7
3	Semutang		654.0	318.0	0.0	13.1	304.9	5
4	Fenchuganj		483.0	329.0	0.2	159.3	169.7	116
5	Salda Nadi		393.0	275.0	0.1	91.8	183.2	58
6	Srikail*		230.0	161.0	1.0	86.5	74.5	143
7	Sundalpur *		62.2	50.2	0.2	13.1	37.1	0
8	Rupganj		48.0	33.6	0.0	0.7	32.9	1
Bapex			2,332.2	1,460.8	3.6	432.8	1,028.0	332
9	Meghna		122.0	101.0	0.3	70.6	30.4	110
10	Narshingdi		405.0	345.0	0.9	204.1	140.9	424
11	Kamta		72.0	50.0	0.0	21.1	28.9	4
12	Habiganj		3,981.0	2,787.0	6.3	2,460.2	326.8	133
13	Bakhrabad		1,825.0	1,387.0	1.1	816.7	570.3	1,022
14	Titas		9,039.0	7,582.0	14.8	4,726.7	2,855.3	5,286
BGFCL			15,444.0	12,252.0	23.4	8,299.5	3,952.5	6,980
15	Sangu		976.0	771.0	0.0	489.5	281.5	37
Santos/Cairn			976.0	771.0	0.0	489.5	281.5	37
16	Bibiyana		5,321.0	4,532.0	40.5	3,787.1	744.9	22,511
17	Moulavi Bazar		630.0	494.0	0.5	324.8	169.2	118
18	Jalalabad**		1,346.0	1,346.0	6.9	1,311.4	34.6	10,271
Chevron			7,297.0	6,372.0	47.9	5,423.3	948.7	32,899
19	Feni		185.0	130.0	0.0	63.0	67.0	110
Niko			185.0	129.6		63.0	66.6	110
20	Kailas Tila		3,463.0	2,880.0	1.8	736.1	2,143.9	7,864
21	Sylhet		580.0	408.0	0.1	214.9	193.1	800
22	Rashidpur		3,887.0	3,134.0	1.5	635.2	2,498.8	781
23	Chattak		677.0	474.0	0.0	25.8	448.2	4
24	Beani Bazar		225.0	137.0	0.3	96.5	40.5	1,588
SGFL			8,832.0	7,033.0	3.7	1,708.6	5,324.4	11,038
25	Bangura		730.0	621.0	2.9	439.6	181.4	1,109
Tullow			730.0	621.0	2.9	439.6	181.4	1,109
26	Kutubdia		65.0	46.0	0.0	0.0	46.0	0
Total			35,796.2	28,685.4	81.55	16,856.3	11,829.1	52,504

* Preliminary reserve estimated by BAPEX

** 2P reserve estimation by Petrobangla has crossed the limit. So 2P reserve is estimated as GIIP reserve now.

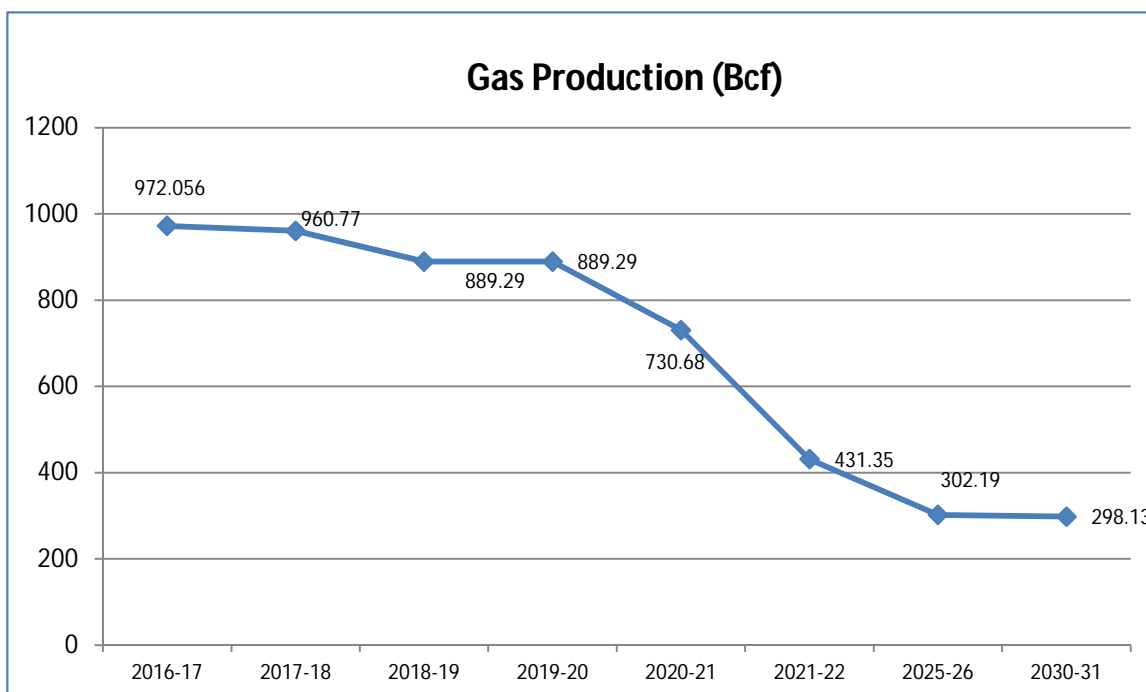
Production comparison between April'19 & May'19



SI No.	Field	Gas Prod. (MMcf) in April'19	Daily Avg. (MMcfd) in April'19	Gas Prod. (MMcf) in May'19	Daily Avg. (MMcfd) in May'19
1	Begumganj	197	7	194	6
2	Shahbazpur	1797	60	1857	60
3	Semutang	24	1	23	1
4	Fenchuganj	245	8	172	6
5	Salda Nadi	136	5	128	4
6	Srikail	1052	35	1050	34
7	Sundalpur	212	7	218	7
8	Rupganj	0	0	0	0
Bapex		3663	122	3642	117
9	Meghna	302	10	293	9
10	Narshingdi	852	28	885	29
11	Kamta	0	0	0	0
12	Habiganj	6104	203	6276	202
13	Bakhrabad	894	30	1094	35
14	Titas	14828	494	14810	478
BGFCL		22979	766	23358	753
15	Sangu	0	0	0	0
Santos/Cairn		0	0	0	0
16	Bibiyana	38499	1283	40489	1306
17	Moulavi Bazar	418	14	523	17
18	Jalalabad	6546	218	6922	223
Chevron		45464	1515	47934	1546
19	Feni	0	0	0	0
Niko		0	0	0	0
20	Kailas Tila	1779	59	1846	60
21	Sylhet	113	4	117	4
22	Rashidpur	1491	50	1517	49
23	Chattak	0	0	0	0
24	Beani Bazar	256	9	269	9
SGFL		3639	121	3748	121
25	Bangura	2848	95	2864	92
Tullow		2848	95	2864	92
26	Kutubdia	0	0	0	0
Total		78593	2620	81546	2631

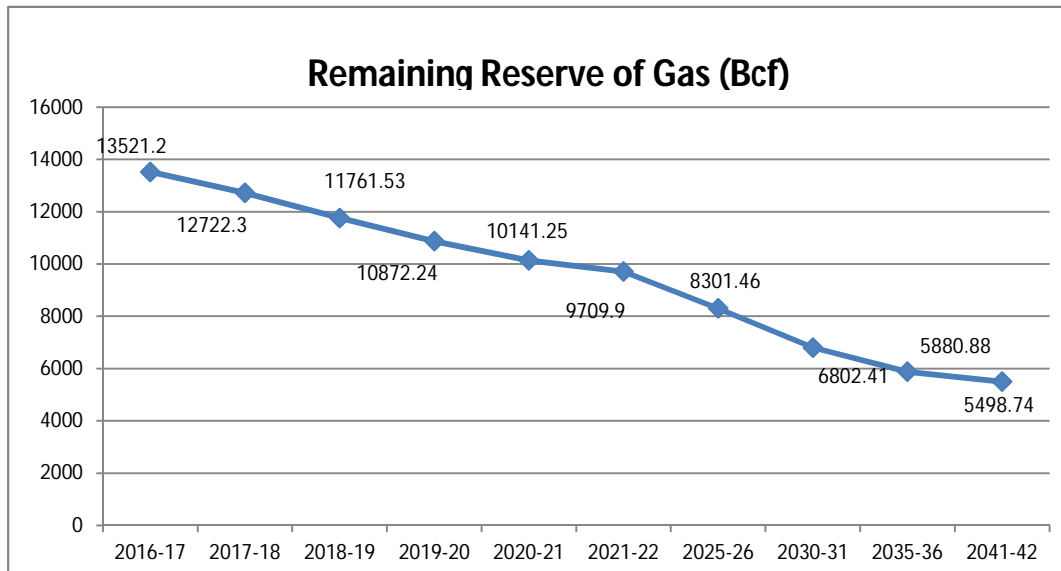
Probable Yearwise Production of GAS

	Total 2P Reserve	Cumulative Production	production									
			2016-17	2017-18	2018-19	2019-20	2020-21	2021-22	2025-26	2030-31	2035-36	2041-42
Titas	7582	4556.6	191.13	195.42	195.42	195.42	195.42	195.42	195.42	195.42	0	0
Habiganj	2787	2386.8	81.17	79.9	79.9	79.9	79.9	79.9				
kamta	50	21.1	0	0		0	0	0	0	0	0	0
Bakhrabad	1387	806.9	14.26	12.02	12.02	12.02	12.02	12.02	12.02	12.02	12.02	12.02
Narshingdi	345	195	10.32	10.02	10.02	10.02	10.02	10.02	10.02	10.02		
Meghna	101	66.7	4.43	4.62	4.62	4.62	4.62	4.62	1.96			
Feni	130	63	0	0	0	0	0	0	0	0	0	0
Kailas Tila	2880	715	23.72	22.96	22.96	22.96	22.96	22.96	22.96	22.96	22.96	22.96
Sylhet	408	213.5	2.8	1.79	1.79	1.79	1.79	1.79	1.79	1.79	1.79	1.79
Rashidpur	3134	618.1	20.61	19.51	19.51	19.51	19.51	19.51	19.51	19.51	19.51	19.51
Chattak	474	25.8	0	0	0							
Beani Bazar	137	93.6	4.19	3.5	3.5	3.5	3.5	3.5	3.5	1.4		
Shahbazpur	261	47.5	9.78	15.26	15.26	15.26	15.26	15.26	15.26	15.26		
Semutang	318	12.9	0.78	0.46	0.46	0.46	0.46	0.46	0.46	0.46	0.46	0.46
Fenchuganj	329	156.1	8.77	4.7	4.7	4.7	4.7	4.7	4.7	4.7	4.7	4.7
Saldanadi	275	90.3	1.89	1.06	1.06	1.06	1.06	1.06	1.06	1.06	1.06	1.06
Sundalpur	50.2	10.7	0	0.94	0.94	0.94	0.94	0.94	0.94	0.94	0.94	0.94
Srikail	161	75.1	14.99	12.93	12.93	12.93	12.93	12.93	0			
Jalalabad	1346	1233.3	96.81	92.09	20.61	20.61						
Moulavi Baz	494	317.3	13.71	12.34	12.34	12.34	12.34	12.34	12.34	12.34		
Bibiyana	4532	3357.7	437.17	437.33	437.33	437.33	299.33					
Bangura	621	409.4	35.09	33.67	33.67	33.67	33.67	33.67				
Sangu	771	489.5	0	0	0	0	0	0				
Begumganj	33	0.9	0.006	0	0	0	0	0				
Rupganj	33.6	0.7	0.43	0.25	0.25	0.25	0.25	0.25	0.25	0.25	0.25	0.25
Kutubdia	46	0	0	0	0							
	28685.8	15963.5	972.056	960.77	889.29	889.29	730.68	431.35	302.19	298.13	63.69	63.69



Probable Year wise Remaining GAS

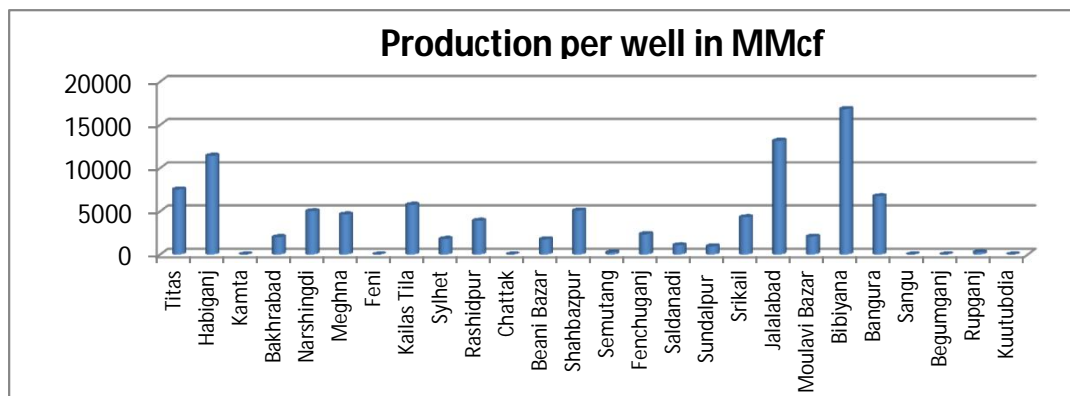
	Total 2p Reserve	Cumulative production	Remaining									
			2016-17	2017-18	2018-19	2019-20	2020-21	2021-22	2025-26	2030-31	2035-36	2041-42
Titas	7582	4556.6	3220.8	3025.4	2829.98	2634.56	2439.14	2243.72	1462.04	484.94	0	0
Habiganj	2787	2386.8	480.1	400.2	320.3	240.4	160.5	80.6			0	0
kamta	50	21.1	28.9	28.9	28.9	28.9	28.9	28.9	28.9	28.9	28.9	28.9
Bakhrabad	1387	806.9	592.1	580.1	568.08	556.06	544.04	532.02	483.94	423.84	363.74	291.62
Narshingdi	345	195	160	150	139.98	129.96	119.94	109.92	69.84	19.74	0	0
Meghna	101	66.7	38.9	34.3	29.68	25.06	20.44	15.82	0	0	0	0
Feni	130	63	67	67	67	67	67	67	67	67	0	0
Kailas Tila	2880	715	2188	2165	2142.04	2119.08	2096.12	2073.16	1981.32	1866.52	1751.72	1613.96
Sylhet	408	213.5	196.3	194.5	192.71	190.92	189.13	187.34	180.18	171.23	162.28	151.54
Rashidpur	3134	618.1	2535.4	2515.9	2496.39	2476.88	2457.37	2437.86	2359.82	2262.27	2164.72	2047.66
Chattak	474	25.8	448.2	448.2	448.2	448.2	448.2	448.2	448.2	448.2	448.2	448.2
Beani Bazar	137	93.6	46.9	43.4	39.9	36.4	32.9	29.4	15.4	0	0	0
Shahbazpur	261	47.5	228.8	213.5	198.24	182.98	167.72	152.46	91.42	15.12	0	0
Semutang	318	12.9	305.6	305.1	304.64	304.18	303.72	303.26	301.42	299.12	296.82	294.06
Fenchuganj	329	156.1	177.6	172.9	168.2	163.5	158.8	154.1	135.3	111.8	88.3	60.1
Saldanadi	275	90.3	185.7	184.7	183.64	182.58	181.52	180.46	176.22	170.92	165.62	159.26
Sundalpur	50.2	10.7	40.4	39.5	38.56	37.62	36.68	35.74	31.98	27.28	22.58	16.94
Srikail	161	75.1	98.9	85.9	72.97	60.04	47.11	34.18	0	0	0	0
Jalalabad	1346	1233.3	42.8	112.7	20.61	0	0	0	0	0	0	0
Moulavi Baz	494	317.3	189.1	176.7	164.36	152.02	139.68	127.34	77.98	16.28	0	0
Bibiyana	4532	3357.7	1611.7	1174.3	736.97	299.64	0	0	0	0	0	0
Bangura	621	409.4	245.2	211.6	177.93	144.26	110.59	76.92	0	0	0	0
Sangu	771	489.5	281.5	281.5	281.5	281.5	281.5	281.5	281.5	281.5	281.5	281.5
Begumganj	33	0.9	32.1	32.1	32.1	32.1	32.1	32.1	32.1	32.1	32.1	32.1
Rupganj	33.6	0.7	33.2	32.9	32.65	32.4	32.15	31.9	30.9	29.65	28.4	26.9
Kutubdia	46	0	46	46	46	46	46	46	46	46	46	46
Total	28685.8	15963.5	13521.2	12722.3	11761.5	10872.2	10141.3	9709.9	8301.46	6802.41	5880.88	5498.74



Production per well & production reserve ratio



	No of well	Total 2p- Recoverable	2017-18 production	production per well mmcf	production reserve ratio
Titas	26	7582	195.42	7516.15	0.026
Habiganj	7	2787	79.9	11414.29	0.029
Kamta	0	50	0	0.00	0.000
Bakhrabad	6	1387	12.02	2003.33	0.009
Narshingdi	2	345	10.02	5010.00	0.029
Meghna	1	101	4.62	4620.00	0.046
Feni	0	130	0	0.00	0.000
Kailas Tila	4	2880	22.96	5740.00	0.008
Sylhet	1	408	1.79	1790.00	0.004
Rashidpur	5	3134	19.51	3902.00	0.006
Chattak	0	474	0	0.00	0.000
Beani Bazar	2	137	3.5	1750.00	0.026
Shahbazpur	3	261	15.26	5086.67	0.058
Semutang	2	318	0.46	230.00	0.001
Fenchuganj	2	329	4.7	2350.00	0.014
Saldanadi	1	275	1.06	1060.00	0.004
Sundalpur	1	50.2	0.94	940.00	0.019
Srikail	3	161	12.93	4310.00	0.080
Jalalabad	7	1346	92.09	13155.71	0.068
Moulavi Bazar	6	494	12.34	2056.67	0.025
Bibiyana	26	4532	437.33	16820.38	0.096
Bangura	5	621	33.67	6734.00	0.054
Sangu	0	771	0	0.00	0.000
Begumganj	0	33	0	0.00	0.000
Rupganj	1	33.6	0.25	250.00	0.007
Kuutubdia	0	46	0	0.00	0.000
Total	111	28685.8	960.77	8655.59	0.033



Monthly Production by Field and Well upto May- 2019



HYDROCARBON UNIT
Energy & Mineral Resources Division

Figure

Well	Jan	Feb	Mar	Apr	May	Jun	Jul	Aug	Sep	Oct	Nov	Dec	Total	Cumulative	2018	2017
Field : Bakharabad																
BKB-1	0	0	0	0	243								243	141,409	0	0
BKB-2	34	32	37	36	38								177	86,748	445	543
BKB-3	154	151	154	152	149								761	161,606	1,989	2,249
BKB-4	0	0	0	0	0								0	55,872		
BKB-5	155	140	154	146	141								736	59,547	1,822	1,847
BKB-6	0	0	0	0	0								0	50,069	0	
BKB-7	0	0	0		0								0	107,750	0	0
BKB-8	158	170	214	230	214								986	127,247	2,017	3,462
BKB-9	251	229	248	242	215								1,186	22,308	3,332	3,637
BKB-10	98	84	91	89	94								456	4,130	1,297	1,453
Field Total:	852	807	898	894	1,094	0	0	0	0	0	0	0	4,545	816,686	10,903	13,190
Daily Avg.(mmscfd)	27	29	29	30	35	0	0	0	0	0	0	0	30		30	36
Field : Bangura																
Bangura-1	384	343	377	363	368								1,836	91,090	4,615	4,914
Bangura-2	504	437	472	469	458								2,340	81,878	6,802	7,837
Bangura-3	601	516	563	544	544								2,767	99,494	7,265	8,662
Bangura-6	343	306	319	320	312								1,601	10,548	4,847	4,100
Bangura-5	1,212	1,087	1,200	1,153	1,182								5,833	156,576	8,410	9,699
Field Total:	3,044	2,690	2,931	2,848	2,864	0	0	0	0	0	0	0	14,377	439,586	31,940	35,212
Daily Avg.(mmscfd)	98	96	95	95	92	0	0	0	0	0	0	0	95		88	96
Field : Beani Bazar																
BB-1	0	0	0	0	0	0	0	0	0	0	0	0	0	35,481	0	1,023
BB-2	274	239	266	256	269								1,304	61,041	3,276	3,282
Field Total:	274	239	266	256	269	0	0	0	0	0	0	0	1,304	96,521	3,276	4,306
Daily Avg.(mmscfd)	9	9	9	9	9	0	0	0	0	0	0	0	9		9	12
Field : Bibiyana																
BY-1	2,554	2,149	2,272	2493	2,668								12,135	380,020	21,743	35,595
BY-2	1,632	1,327	1,573	1544	1,560								7,637	282,064	21,388	23,957
BY-3	737	608	567	549	526								2,987	238,256	6,249	9,904
BY-4	1,865	1,587	1,790	1921	2,125								9,288	189,826	28,559	6,571
BY-5	762	698	718	297	668								3,144	175,111	6,131	8,117
BY-6	792	617	771	809	937								3,924	225,420	11,057	11,879
BY-7	2,548	2,171	2,391	2190	2,322								11,622	256,205	23,155	32,874
BY-8	768	713	753	777	761								3,772	138,016	8,921	12,486
BY-9	553	482	359	476	484								2,354	126,972	4,093	6,247

Monthly Production by Field and Well upto May- 2019



HYDROCARBON UNIT

Energy & Mineral Resources Division

Figure

Well	Jan	Feb	Mar	Apr	May	Jun	Jul	Aug	Sep	Oct	Nov	Dec	Total	Cumulative	2018	2017
BY-10	2,106	1,752	2,357	2244	2,233								10,691	345,689	30,954	32,967
BY-11	797	626	657	818	861								3,758	123,719	12,147	6,813
BY-12	2,162	2,177	2,205	2245	2,280								11,070	133,773	6,835	8,284
BY-13	959	569	880	798	950								4,156	77,115	13,171	11,842
BY-14	800	730	845	666	777								3,817	94,430	11,523	15,354
BY-15	1,829	1,420	1,646	1693	2,124								8,712	105,633	24,295	19,111
BY-16	908	823	806	741	807								4,086	65,158	9,264	12,541
BY-17	1,794	1,176	1,440	1496	1,576								7,482	85,354	17,603	15,412
BY-18	2,784	2,387	2,668	2541	2,546								12,927	130,729	31,890	29,509
BY-19	1,761	2,275	2,368	2362	2,407								11,173	43,251	8,144	9,859
BY-20	1,636	2,008	2,113	2176	1,384								9,318	47,163	7,840	6,533
BY-21	634	531	656	671	719								3,211	38,435	9,670	13,246
BY-22	1,742	1,310	1,480	1517	1,833								7,882	115,682	24,755	27,093
BY-23	2,261	1,781	2,212	2100	2,190								10,544	62,591	32,043	15,333
BY-24	870	712	824	826	830								4,063	62,226	13,268	13,484
BY-25	2,070	2,145	2,340	2229	2,396								11,180	116,360	28,306	30,331
BY-26	2,683	2,344	2,465	2318	2,524								12,334	127,899	33,853	30,446
Field Total:	40006	35117	39154	38499	40489	0	0	0	0	0	0	0	193,266	3,787,094	446,855	445,787
Daily Avg.(mmscfd)	1291	1254	1263	1283	1306	0	0	0	0	0	0	0	1,280		1,224	1,221
Field :	Chattak															
Ch-1	Production Suspended													25,834		
Field Total:			0	0	0			0				0		25,834		
Daily Avg.(mmscfd)			0	0				0				0	0		0	
Field :	Fenchuganj															
Fenchuganj-2	0	0	0	0	0								0	38,169	0	0
Fenchuganj-3	274	203	225	217	145								1,064	91,702	3,186	6,192
Fenchuganj-4	60	30	30	28	27								175	29,449	809	441
Field Total:	334	234	255	245	172	0	0	0	0	0	0	0	1,239	159,319	3,994	6,633
Daily Avg.(mmscfd)	11	8	8	8	6	0	0	0	0	0	0	0	8		11	18
Field :	Feni															
Feni-1	Production Suspended								0		0		34,214			
Feni-2	Production Suspended								0		0		6,119			
Feni-3	Production Suspended								0		0		2,176			

Monthly Production by Field and Well upto May- 2019



HYDROCARBON UNIT

Energy & Mineral Resources Division

Figure

Well	Jan	Feb	Mar	Apr	May	Jun	Jul	Aug	Sep	Oct	Nov	Dec	Total	Cumulative	2018	2017	
Feni-4	Production Suspended								0					14,386			
Feni-5	Production Suspended								0					6,127			
Field Total:														63,023			
Daily Avg.(mmscfd)																	
Field :	Habiganj																
Hbj-1	429	375	414	379	369								1,965	280,073	2,207	0	
Hbj-2	0	0	0	0	0								0	275,704	0	0	
Hbj-3	1,105	952	986	925	954								4,923	382,080	13,155	13,151	
Hbj-4	1,105	952	986	925	954								4,923	376,538	13,155	13,151	
Hbj-5	798	711	776	746	770								3,801	301,475	9,497	9,497	
Hbj-6	461	413	459	447	461								2,242	164,452	5,487	5,491	
Hbj-7	1,211	1,090	1,233	1191	1,228								5,953	259,072	14,533	14,565	
Hbj-8	0	0	0	0	0								0	11,023	0	0	
Hbj-9	0	0	0	0	0								0	52,652	0	0	
Hbj-10	969	870	925.3	893	921								4,578	257,711	13,928	14,058	
Hbj-11	697	623	619.27	598	617								3,155	99,462	9,579	10,398	
Field Total:	6,776	5,985	6,400	6,104	6,276	0	0	0	0	0	0	0	31,541	2,460,242	81,540	80,313	
Daily Avg.(mmscfd)	219	214	206	203	202	0	0	0	0	0	0	0	209		223	220	
Field :	Jalalabad																
JB-1	877	733	790	761	813								3,973	249,743	10,469	9,142	
JB-2	1,088	910	978	934	1,001								4,912	284,508	12,973	14,517	
JB-3	1,451	1,214	1,313	1277	1,344								6,599	347,123	17,399	19,162	
JB-4	453	379	410	399	419								2,061	281,061	5,821	7,045	
JB-6	1,451	1,114	1,313	1277	1,332								6,487	65,811	17,364	19,524	
JB-7	1,088	910	985	955	1,014								4,952	34,342	13,053	10,324	
JB-8	1,073	898	971	943	1,000								4,885	48,815	12,793	14,513	
Field Total:	7,482	6,158	6,760	6,546	6,922	0	0	0	0	0	0	0	33,869	1,311,403	89,872	94,226	
Daily Avg.(mmscfd)	241	220	218	218	223	0	0	0	0	0	0	0	224		246	258	
Field :	Kailas Tila																
KTL-1	147	109	114	0	0								371	205,181	462	0	

Monthly Production by Field and Well upto May- 2019



HYDROCARBON UNIT

Energy & Mineral Resources Division

Figure

Well	Jan	Feb	Mar	Apr	May	Jun	Jul	Aug	Sep	Oct	Nov	Dec	Total	Cumulative	2018	2017
KTL-2	612	551	610	585	607								2,964	181,111	7,190	7,242
KTL-3	235	209	228	221	226								1,119	138,939	2,947	3,255
KTL-4	253	228	254	242	238								1,216	97,312	3,336	3,680
KTL-5	0	0	0	0	0								0	17,923	0	0
KTL-6	770	689	765	731	774								3,729	94,817	8,950	9,086
KTL-7	0	0	0	0	0								0	816	0	0
Field Total:	2,017	1,787	1,971	1,779	1,846	0	0	0	0	0	0	0	9,399	736,098	22,886	23,263
Daily Avg.(mmscfd)	65	64	64	59	60	0	0	0	0	0	0	0	62		63	64
Field : Kamta																
Kamta-1	Production Suspended													21,139		
Field Total:			0	0	0									21,139		
Daily Avg.(mmscfd)																
Field : Meghna																
M-1	372	308	314	302	293								1,590	70,564	4,538	4,625
Field Total:	372	308	314	302	293	0	0	0	0	0	0	0	1,590	70,564	4,538	4,625
Daily Avg.(mmscfd)	12	11	10	10	9	0	0	0	0	0	0	0	11		12	13
Field : Moulavi Bazar																
MV Bazar-2	121	79	72	62	58								392	54,430	2,302	2,866
MV Bazar-3	207	149	124	113	173								767	158,575	3,712	4,705
MV Bazar-4	159	102	67	60	54								442	58,509	3,103	3,945
MV Bazar-5	0	0	0	0	0									66		
MV Bazar-6	193	182	132	183	237								928	17,276	1,734	1,676
MV Bazar-7	1	1	0	0	0								3	5,646	21	152
MV Bazar-9	0	0	0	0	0								0	30,335	1	0
Field Total:	682	511	396	418	523	0	0	0	0	0	0	0	2,531	324,838	10,872	13,345
Daily Avg.(mmscfd)	22	18	13	14	17	0	0	0	0	0	0	0	17		30	37
Field : Narshingdi																
N-1	530	479	530	535	566								2,639	147,234	6,181	6,279
N-2	314	278	313	317	319								1,542	56,912	3,705	3,962

Monthly Production by Field and Well upto May- 2019



HYDROCARBON UNIT

Energy & Mineral Resources Division

Figure

Well	Jan	Feb	Mar	Apr	May	Jun	Jul	Aug	Sep	Oct	Nov	Dec	Total	Cumulative	2018	2017
Field Total:	844	757	843	852	885	0	0	0	0	0	0	0	4,181	204,145	9,886	10,241
Daily Avg.(mmscfd)	27	27	27	28	29	0	0	0	0	0	0	0	28		27	28
Field :	Rashidpur															
RP-1	542	491	530	513	537								2,613	169,675	6,505	6,625
RP-2	0	0	0	0	0								0	82,474		
RP-3	300	271	300	286	294								1,450	132,659	3,541	3,730
RP-4	267	239	262	243	237								1,249	129,144	3,227	3,516
RP-5	0	0	0	0	0								0	25,647		
RP-6	0	0	0	0	0								0	9,983	0	0
RP-7	173	155	163	149	143								783	65,109	2,096	2,225
RP-8	314	284	314	300	306								1,518	20,551	3,696	3,977
Field Total:	1,597	1,439	1,569	1,491	1,517	0	0	0	0	0	0	0	7,614	635,242	19,065	20,074
Daily Avg.(mmscfd)	52	51	51	50	49	0	0	0	0	0	0	0	50		52	55
Field :	Salda Nadi															
Salda-1	0	0	0	0	0								0	36,904	0	0
Salda-2	0	0	0	0	0								0	28,495	0	0
Salda-3	123	119	135	130	125								632	26,213	1,067	1,514
Salda-4	4	5	5	6	4								24	141	70	14
Field Total:	127	124	140	136	128	0	0	0	0	0	0	0	656	91,753	1,137	1,527
Daily Avg.(mmscfd)	4	4	5	5	4	0	0	0	0	0	0	0	4		3	4
Field :	Sangu															
Sangu-1	0	0	0	0	0	0	0	0	0	0	0	0	0	116,191	0	0
Sangu-3z	0	0	0	0	0	0	0	0	0	0	0	0	0	131,796	0	0
Sangu-4	Production Suspended						0	0	0	0	0	0	0	87,280		
Sangu-5	Production Suspended						0	0	0	0	0	0	0	61,674		
Sangu-7	Production Suspended						0	0	0	0	0	0	0	18,202		
Sangu-8	Production Suspended						0	0	0	0	0	0	0	37,619		
Sangu-9	0	0	0	0	0	0	0	0	0	0	0	0	0	30,638	0	0
Sangu-10	Production Suspended						0	0	0	0	0	0	0			
Sangu-11	0	0	0	0	0	0	0	0	0	0	0	0	0	6,067	0	0

Monthly Production by Field and Well upto May- 2019



HYDROCARBON UNIT

Energy & Mineral Resources Division

Figure

Well	Jan	Feb	Mar	Apr	May	Jun	Jul	Aug	Sep	Oct	Nov	Dec	Total	Cumulative	2018	2017
Field Total:	0	0	0	0	0	0	0	0	0	0	0	0	0	489,467	0	0
Daily Avg.(mmscfd)	0	0	0	0	0	0	0	0	0	0	0	0	0		0	0
Field :	Semutang															
Semutang-5	14	12	12	10	9								58	12,124	291	471
Semutang-6	7	11	14	14	14								60	1,016	84	66
Field Total:	22	23	27	24	23	0	0	0	0	0	0	0	119	13,139	375	537
Daily Avg.(mmscfd)	1	1	1	1	1	0	0	0	0	0	0	0	1		1	1
Field :	Shahbazpur															
Shahbazpur-1	0	0	0	0	35								35	21,393	134	4,835
Shahbazpur-2	534	523	637	656	678								3,028	14,110	6,650	4,243
Shahbazpur-3	377	436	505	510	536								2,364	14,690	5,222	1,162
Shahbazpur-4	513	452	567	632	608								2,771	15,775	6,936	1,801
Field Total:	1,424	1,411	1,709	1,797	1,857	0	0	0	0	0	0	0	8,197	65,967	18,943	12,041
Daily Avg.(mmscfd)	46	50	55	60	60	0	0	0	0	0	0	0	54		52	33
Field	Srikail															
Srikail-2	442	417	461	443	452								2,216	40,160	5,154	5,384
Srikail-3	358	333	363	337	337								1,727	36,559	4,273	4,944
Srikail-4	276	256	277	272	261								1,341	9,787	2,971	3,439
Field Total:	1,076	1,005	1,102	1,052	1,050	0	0	0	0	0	0	0	5,284	86,505	12,398	13,767
Daily Avg.(mmscfd)	35	36	36	35	34	0	0	0	0	0	0	0	35		34	38
Field :	Sundalpur															
Sundalpur -1	0	0	0		0								0	9,809	0	0
Sundalpur -2	220	200	220	212	218								1,070	3,246	2,176	0
Field Total:	220	200	220	212	218	0	0	0	0	0	0	0	1,070	13,055	2,176	0
Daily Avg.(mmscfd)	7	7	7	7	7	0	0	0	0	0	0	0	7		6	0
Field :	Sylhet															
Sylhet-3	Production Suspended													89,032		
Sylhet-6	Production Suspended													91,748		

Monthly Production by Field and Well upto May- 2019



HYDROCARBON UNIT

Energy & Mineral Resources Division

Figure

Well	Jan	Feb	Mar	Apr	May	Jun	Jul	Aug	Sep	Oct	Nov	Dec	Total	Cumulative	2018	2017
Sylhet-7	131	108	118	113	117								586	27,576	1,622	2,061
Surma-1	0	0	0	0	0								0	6,528	0	249
Field Total:	131	108	118	113	117	0	0	0	0	0	0	0	586	214,884	1,622	2,309
Daily Avg.(mmscfd)	4	4	4	4	4	0	0	0	0	0	0	0	4		4	6
Field :	Titas															
Titas-1	675	537	559	566	571								2,908	442,537	8,516	7,897
Titas-2	962	865	939	906	968								4,639	440,144	11,522	11,506
Titas-3	0	0	0	0	0	0	0	0	0	0	0	0	0	314,888	0	
Titas-4	994	861	960	923	972								4,711	375,162	11,726	11,798
Titas-5	1,020	899	997	968	1,015								4,899	433,151	11,838	11,869
Titas-6	978	878	958	964	142								3,920	367,048	12,030	12,029
Titas-7	947	824	977	891	948								4,586	349,451	11,919	11,707
Titas-8	510	426	498	497	567								2,498	275,133	6,154	6,889
Titas-9	539	475	517	518	583								2,632	279,121	6,706	8,246
Titas-10	647	565	636	619	702								3,168	202,169	7,612	7,431
Titas-11	855	762	867	830	858								4,172	251,073	9,998	10,276
Titas-12	482	422	483	463	476								2,326	103,101	5,160	5,168
Titas-13	580	513	576	552	567								2,789	192,881	6,952	7,879
Titas-14	576	498	566	536	552								2,727	152,712	7,203	8,309
Titas-15	460	412	434	405	420								2,131	141,645	5,543	7,973
Titas-16	669	592	646	612	635								3,154	149,500	8,605	10,060
Titas-17	515	431	507	475	514								2,442	41,945	6,335	7,011
Titas-18	546	458	535	504	540								2,582	40,588	6,664	7,168
Titas-19	507	450	489	458	471								2,375	30,424	6,115	6,106
Titas-20	305	277	310	294	306								1,492	20,320	3,914	3,635
Titas-21	253	232	258	249	263								1,254	10,486	2,995	2,800
Titas-22	309	284	296	231	269								1,388	25,806	4,158	4,336
Titas-27	487	404	478	455	479								2,302	31,142	5,827	6,136
Titas-23	483	436	489	477	496								2,381	12,386	5,594	4,410
Titas-24	202	185	207	196	195								984	5,976	2,709	2,283
Titas-25	528	476	528	508	519								2,559	14,774	6,324	5,622
Titas-26	809	733	801	731	783								3,858	23,123	9,672	9,210

Monthly Production by Field and Well upto May- 2019



HYDROCARBON UNIT
Energy & Mineral Resources Division

Figure

Well	Jan	Feb	Mar	Apr	May	Jun	Jul	Aug	Sep	Oct	Nov	Dec	Total	Cumulative	2018	2017
Field Total:	15,838	13,893	15,509	14,828	14,810	0	0	0	0	0	0	0	74,878	4,726,685	191,792	197,756
Daily Avg.(mmscfd)	511	496	500	494	478	0	0	0	0	0	0	0	496		525	542
Field : Begumganj																
Begumganj-3	176	179	200	197	194								946	2,415	593	0
Field Total:	176	179	200	197	194	0	0	0	0	0	0	0	946	2,415	593	0
Daily Avg.(mmscfd)	6	6	6	7	6	0	0	0	0	0	0	0	6		2	0
Field : Rupganj																
Rupganj-1	0	0	0										0	679	0	679
Field Total:	0	0	0	0	0	0	0	0	0	0	0	0	0	679	0	679
Daily Avg.(mmscfd)	0	0	0	0	0	0	0	0	0	0	0	0	0		0	2
Grand Total (in Bcf)	83.29	72.98	80.78	78.59	81.55	0.00	0	0.00	0.00	0.00	0.00	0.00	397.2	16,856.28	964.7	979.8
Daily Avg.(mmscfd)	2,687	2,606	2,606	2,620	2,631	0	0	0	0	0	0	0	2,630		2,643	2,684

Monthly Condensate Production by Fields upto May 2019



Field Name	Jan-19	Feb-19	Mar-19	Apr-19	May-19	Jun-19	Jul-19	Aug-19	Sep-19	Oct-19	Nov-19	Dec-19	Total	Cumulative 000' bbl	2018	2017	2016
Bakhrabad	475	462	432	402	550								2,321	1,022	5,022	6,173	7,091
Daily Avg.	15	17	14	13	18	0	0	0	0	0	0	0	15		14	17	229
Bangura	9,547	8,321	8,755	8,380	8,381								43,384	1,109	94,737	103,198	103,416
Daily Avg.	308	297	282	279	270	0	0	0	0	0	0	0	287		260	283	3,336
Beani Bazar	4,207	3,945	4,525	4,262	4,394								21,331	1,588	51,187	68,202	56,146
Daily Avg.	136	141	146	142	142	0	0	0	0	0	0	0	141		140	187	1,811
Bibiyana	286,489	247,882	275,825	268,384	277,796								1,356,376	22,511	3,267,318	3,283,757	3,291,906
Daily Avg.	9,242	8,853	8,898	8,946	8,961	0	0	0	0	0	0	0	8,983		8,952	8,997	106,191
Chattak	0	0	0	0	0	0	0	0	0	0	0	0	0	4	0		
Daily Avg.	0	0	0	0	0	0	0	0	0	0	0	0	0		0		
Fenchuganj	126	80	121	108	90								524	116	1,625	2,462	6,138
Daily Avg.	4	3	4	4	3	0	0	0	0	0	0	0	3		4	7	198
Feni	0	0	0	0	0	0	0	0	0	0	0	0	0	110	0	0	0
Daily Avg.	0	0	0	0	0	0	0	0	0	0	0	0	0		0	0	0
Habiganj	721	610	776	681	642								3,430	133	5,612	3,955	4,143
Daily Avg.	23	22	25	23	21	0	0	0	0	0	0	0	23		15	11	134
Jalalabad	29,901	23,874	25,898	25,716	26,805								132,194	10,271	367,160	437,070	528,191
Daily Avg.	965	853	835	857	865	0	0	0	0	0	0	0	14		1,006	1,197	17,038
Kailas Tila	17,562	17,085	16,738	16,259	1,545								69,188	7,864	189,620	203,979	223,169
Daily Avg.	567	610	540	542	50	0	0	0	0	0	0	0	458		520	559	7,199
Kamta	Production Suspended									0	0			4			
Daily Avg.										0	0			0	0	0	
Meghna	589	514	647	678	645								3,073	110	7,947	7,741	7,735
Daily Avg.	19	18	21	23	21	0	0	0	0	0	0	0	20		22	21	250
Moulavi Bazar	104	80	63	53	62								361	118	856	1,128	1,585
Daily Avg.	3	3	2	2	2	0	0	0	0	0	0	0	2		2	3	51

Monthly Condensate Production by Fields upto May 2019



Field Name	Jan-19	Feb-19	Mar-19	Apr-19	May-19	Jun-19	Jul-19	Aug-19	Sep-19	Oct-19	Nov-19	Dec-19	Total	Cumulative	2018	2017	2016
														000' bbl			
Narshingdi	1,285	1,131	1,235	1,205	1,217								6,073	424	15,797	16,656	17,534
Daily Avg.	41	40	40	40	39	0	0	0	0	0	0	0	40		43	46	566
Rashidpur	1,213	1,038	1,083	1,069	1,084								5,486	781	14,393	10,723	14,938
Daily Avg.	39	37	35	36	35	0	0	0	0	0	0	0	36		39	29	482
Saldanadi	19	19	21	20	19								97	58	137	225	386
Daily Avg.	1	1	1	1	1	0	0	0	0	0	0	0	1		0	1	12
Sangu	0	0	0	0	0	0	0	0	0	0	0	0	0	37	0	0	0
Daily Avg.	0	0	0	0	0	0	0	0	0	0	0	0	0		0	0	0
Semutang	0	0	0	0	0								0	5	26	99	272
Daily Avg.	0	0	0	0	0	0	0	0	0	0	0	0	0		0	0	9
Shahbazpur	187	148	211	207	207								960	7	2,488	1,791	839
Daily Avg.	6	5	7	7	7	0	0	0	0	0	0	0	6		7	5	27
Srikail	3,226	2,920	3,143	2,913	2,950								15,152	143	33,765	37,879	21,075
Daily Avg.	104	104	101	97	95	0	0	0	0	0	0	0	100		93	104	680
Sundalpur	10	9	10	10	9								48	0	121	0	0
Daily Avg.	0	0	0	0	0	0	0	0	0	0	0	0	0		0	0	0
Sylhet	969	864	981	881	901								4,597	800	10,277	15,593	20,532
Daily Avg.	31	31	32	29	29	0	0	0	0	0	0	0	30		28	43	662
Titas	13,655	11,331	12,573	12,503	12,163								62,225	5,286	159,803	154,262	133,133
Daily Avg.	440	405	406	417	392	0	0	0	0	0	0	0	412		438	423	4,295
Begumganj	60	60	57	63	58								298	1	201	0	0
Daily Avg.	2	0	0	0	0	0	0	0	0	0	0	0	2		1	0	0
Rupganj	0	0	0	0									0	1	0	1,133	
Daily Avg.	0	0	0	0	0	0	0	0	0	0	0	0	0		0	3	
Total (000'bbl)	370	320	353	344	340	0	0	0	0	0	0	0	1,727	52,504	4,228	4,356	4,438
Daily Avg. (000'bbl)	11.9	11.4	11.4	11.5	11.0	0	0.0	0.0	0.0	0.0	0	0	11		11.6	11.9	12.2

Note: Historical condensate figure of Sangu available from 2006. Sylhet available from August 1964

Monthly Water Production by Fields in May 2019



HYDROCARBON UNIT
Energy & Mineral Resources Division

Field Name	Jan-19	Feb-19	Mar-19	Apr-19	May-19	Jun-19	Jul-19	Aug-19	Sep-19	Oct-19	Nov-19	Dec-19	Total	2,018	2,017
Bakhrabad	2,117	1,708	1,795	1,720	2,049								9,389	28,218	8,419
Daily Avg.	68	61	58	57	66	0	0	0	0	0	0	0	62	77	
Bangura	3,330	3,016	3,301	3,107	3,197								15,951	43,917	11,705
Daily Avg.	107	108	106	104	103	0	0	0	0	0	0	0	106	120	
Beani Bazar	9,793	8,568	9,561	9,283	10,305								47,511	109,854	24,865
Daily Avg.	316	306	308	309	332	0	0	0	0	0	0	0	315	301	
Bibiyana	16,351	14,524	15,756	15,544	16,508								78,683	194,651	47,219
Daily Avg.	527	519	508	518	533	0	0	0	0	0	0	0	521	533	
Chattak	0	0	0	0	0	0	0	0	0	0	0	0			
Daily Avg.	0	0	0	0	0	0	0	0	0	0	0	0	0	0	
Fenchuganj	6,323	3,006	3,558	3,470	2,712								19,067	74,969	6,700
Daily Avg.	204	107	115	116	87	0	0	0	0	0	0	0	126	205	
Feni	0	0	0	0	0	0	0	0	0	0	0	0	0	0	0
Daily Avg.	0	0	0	0	0	0	0	0	0	0	0	0	0	0	0
Habiganj	2,532	2,133	1,034	874	988								7,561	39,104	5,197
Daily Avg.	82	76	33	29	32	0	0	0	0	0	0	0	50	107	
Jalalabad	4,717	4,157	4,424	4,369	4,254								21,921	55,950	12,915
Daily Avg.	152	148	143	146	137	0	0	0	0	0	0	0	145	153	
Kailas Tila	3,934	3,519	3,851	3,562	1,772								16,638	43,233	6,809
Daily Avg.	127	126	124	119	57	0	0	0	0	0	0	0	110	118	
Kamta	0	0	0	0	0	0	0	0	0	0	0	0			
Daily Avg.	0	0	0	0	0	0	0	0	0	0	0	0	0	0	
Meghna	211	429	525	631	631								2,427	2,014	551
Daily Avg.	7	15	17	21	20	0	0	0	0	0	0	0	16	6	
Moulavi Bazar	1,379	710	735	550	427								3,802	13,965	754
Daily Avg.	44	25	24	18	14	0	0	0	0	0	0	0	25	38	
Narshingdi	883	798	888	879	939								4,387	10,374	2,645
Daily Avg.	28	29	29	29	30	0	0	0	0	0	0	0	29	28	
Rashidpur	13,567	12,332	13,512	12,940	13,181								65,532	137,406	30,969
Daily Avg.	438	440	436	431	425	0	0	0	0	0	0	0	434	376	
Saldanadi	129	115	126	127	131								628	813	387
Daily Avg.	4	4	4	4	4	0	0	0	0	0	0	0	4	2	

Monthly Water Production by Fields in May 2019



HYDROCARBON UNIT
Energy & Mineral Resources Division

Field Name	Jan-19	Feb-19	Mar-19	Apr-19	May-19	Jun-19	Jul-19	Aug-19	Sep-19	Oct-19	Nov-19	Dec-19	Total	2,018	2,017
Sangu	0	0	0	0	0	0	0	0	0	0	0	0	0	0	0
Daily Avg	0	0	0	0	0	0	0	0	0	0	0	0	0	0	0
Semutang	45	47	69	63	65								288	3,002	719
Daily Avg	1	2	2	2	2	0	0	0	0	0	0	0	2	8	
Shahbazpur	1,789	1,679	2,096	2,180	2,244								9,988	22,110	3,912
Daily Avg.	58	60	68	73	72	0	0	0	0	0	0	0	66	61	
Srikail	1,649	1,517	2,021	1,641	1,662								8,489	18,432	4,904
Daily Avg.	53	54	65	55	54	0	0	0	0	0	0	0	56	50	
Sundalpur	26	24	27	27	27								131	219	0
Daily Avg.	1	1	1	1	1	0	0	0	0	0	0	0	1	1	
Sylhet	2,312	2,022	2,221	2,156	2,234								10,946	20,362	1,298
Daily Avg.	75	72	72	72	72	0	0	0	0	0	0	0	72	56	
Titas	49,706	45,683	50,613	49,852	54,221								250,075	556,608	126,334
Daily Avg.	1,603	1,632	1,633	1,662	1,749	0	0	0	0	0	0	0	1,656	1,525	
Begumganj	69	54	61	59	59								301	207	0
Daily Avg.	2	2	2	2	2	0	0	0	0	0	0	0	2	1	
Rupganj	0		0										0	0	34
Daily Avg.	0	0	0	0	0	0	0	0	0	0	0	0	0	0	
Total (000'bl)	120,860	106,040	116,173	113,034	117,606	0	0	0	0	0	0	0	573,714	1,375,408	296
Daily Avg. (000'bb)	3,899	3,787	3,748	3,768	3,794	0	0	0	0	0	0	0	3,799	3,768	1

Conditions of Field and Well upto May 2019



Well	company	well type	Discovery	production start	Drilled depth (ft)	Pressure	Pressure type	Completion Zone
Field : Bakharabad								
BKB-1	BGFCL	Vertical	1969	June,1969	9309		FWHP	J
BKB-2	BGFCL	Directional	1969	October,1981	7496	248-274	FWHP	G
BKB-3	BGFCL	Directional	1969	April,1982	9339	356-412	FWHP	G
BKB-4	BGFCL	Directional	1969	June,1982	9430			D
BKB-5	BGFCL	Directional	1969	Sept,1982	9675	1555-1646	FWHP	B
BKB-6	BGFCL	Directional	1969	March,1989	8785			J
BKB-7	BGFCL	Directional	1969	July,1989	8605		FWHP	J
BKB-8	BGFCL	Directional	1969	Sept,1989	8840	490-523	FWHP	J
BKB-9	BGFCL	Vertical	1969	August,2013	8318	1005-1097	FWHP	G
BKB-10	BGFCL	Directional	1969	June,2016	9291	1010-1102	FWHP	K
Field : Bangura								
Bangura-1	Tullow		2004			887-940	FWHP	D
Bangura-2	Tullow		2004			587-685	FWHP	D/E
Bangura-3	Tullow		2004			719-789	FWHP	D
Bangura-6	Tullow		2004			708-780	FWHP	D
Bangura-5	Tullow		2004			579-621	FWHP	D
Field : Beani Bazar								
BB-1	SGFL		1981	July,1999	13480	580-620	SIWHP	Upper
BB-2	SGFL		1981	July,1999	12048	3210-3220	FWHP	Upper
Field : Bibiyana								
BY-1	Chevron		1998			1547-2007	FWHP	BB60, BB66
BY-2	Chevron		1998			1313-1390	FWHP	BB60, BH20A, BH20E
BY-3	Chevron		1998			1363-1403	FWHP	BB70
BY-4	Chevron		1998			1330-1390	FWHP	BH10
BY-5	Chevron		1998			1254-1299	FWHP	BH20A, BH20B, BH20C, BH20D
BY-6	Chevron		1998			1250-1486	FWHP	BB70
BY-7	Chevron		1998			1454-1566	FWHP	BH10
BY-8	Chevron		1998			1270-1297	FWHP	BH20A, BH20B
BY-9	Chevron		1998			1243-1273	FWHP	BH10
BY-10	Chevron		1998			1465-1533	FWHP	BB60
BY-11	Chevron		1998			1260-1284	FWHP	BH20A, BH20B
BY-12	Chevron		1998			1259-1332	FWHP	BB70
BY-13	Chevron		1998			1300-1356	FWHP	BH20A, BH20B
BY-14	Chevron		1998			1342-1632	FWHP	BH20A, BH20B
BY-15	Chevron		1998			2189-2240	FWHP	BB60
BY-16	Chevron		1998			1381-1644	FWHP	BH10, BH20D

Conditions of Field and Well upto May 2019



Well	company	well type	Discovery	production start	Drilled depth (ft)	Pressure	Pressure type	Completion Zone
BY-17	<i>Chevron</i>		1998			2104-2229	<i>FWHP</i>	<i>BB60</i>
BY-18	<i>Chevron</i>		1998			1904-2218	<i>FWHP</i>	<i>BB60</i>
BY-19	<i>Chevron</i>		1998			1354-1477	<i>FWHP</i>	<i>BH10, BH20A</i>
BY-20	<i>Chevron</i>		1998			1248-1262	<i>FWHP</i>	<i>BH20D, BH20A, BH10</i>
BY-21	<i>Chevron</i>		1998			1333-1348	<i>FWHP</i>	<i>BH20A, BH20B, BH10</i>
BY-22	<i>Chevron</i>		1998			1552-1586	<i>FWHP</i>	<i>BB60</i>
BY-23	<i>Chevron</i>		1998			1739-2021	<i>FWHP</i>	<i>BH10, BH20A, BH20B, BH20C</i>
BY-24	<i>Chevron</i>		1998			1337-2091	<i>FWHP</i>	<i>BB60</i>
BY-25	<i>Chevron</i>		1998			1728-1857	<i>FWHP</i>	<i>BB60, BB66</i>
BY-26	<i>Chevron</i>		1998			1877-2094	<i>FWHP</i>	<i>BB60, BB64</i>
Field : Chattak								
Ch-1	SGFL		1959					
Field : Fenchuganj								
Fenchuganj-2	BAPEX		1988	May, 2004				
Fenchuganj-3	BAPEX		1988	February, 2005		2004-2010		<i>upper</i>
Fenchuganj-4	BAPEX		1988			2037-2065		
Field : Feni								
Feni-1	BAPEX		1981					
Feni-2	BAPEX		1981					
Feni-3	BAPEX		1981					
Feni-4	BAPEX		1981					
Feni-5	BAPEX		1981					
Field : Habiganj								
Hbj-1	BGFCL	<i>Vertical</i>	1963	Feb,1969	11500		<i>FWHP</i>	<i>upper</i>
Hbj-2	BGFCL	<i>Vertical</i>	1963	Feb,1969	5100		<i>FWHP</i>	<i>upper</i>
Hbj-3	BGFCL	<i>Vertical</i>	1963	July,1985	5282	1478-1486	<i>FWHP</i>	<i>upper</i>
Hbj-4	BGFCL	<i>Vertical</i>	1963	May,1985	5249	1460-1467	<i>FWHP</i>	<i>upper</i>
Hbj-5	BGFCL	<i>Directional</i>	1963	Feb,1992	11552	1440-1446	<i>FWHP</i>	<i>upper</i>
Hbj-6	BGFCL	<i>Vertical</i>	1963	Feb,1992	5515	1375-1379	<i>FWHP</i>	<i>upper</i>
Hbj-7	BGFCL	<i>Vertical</i>	1963	April,2000	10236	1331-1139	<i>FWHP</i>	<i>upper</i>
Hbj-8	BGFCL	<i>Vertical</i>	1963	May, 2000	5280			<i>upper</i>
Hbj-9	BGFCL	<i>Vertical</i>	1963	July,1998	5249			<i>upper</i>
Hbj-10	BGFCL	<i>Vertical</i>	1963	Apr, 2000	5133	1322-1331	<i>FWHP</i>	<i>upper</i>
Hbj-11	BGFCL	<i>Vertical</i>	1963	February,2008	10499	1417-1423	<i>FWHP</i>	<i>upper</i>
Field : Jalalabad								
JB-1	<i>Chevron</i>		1989			1333-1436	<i>FWHP</i>	<i>BB60, BB50</i>

Conditions of Field and Well upto May 2019



Well	company	well type	Discovery	production start	Drilled depth (ft)	Pressure	Pressure type	Completion Zone
JB-2	<i>Chevron</i>		1989			1279-1294	<i>FWHP</i>	<i>BB50, BB60</i>
JB-3	<i>Chevron</i>		1989			1332-1375	<i>FWHP</i>	<i>BB50, BB60</i>
JB-4	<i>Chevron</i>		1989			1365-1425	<i>FWHP</i>	<i>BB60</i>
JB-6	<i>Chevron</i>		1989			1354-1362	<i>FWHP</i>	<i>BB60, BB50</i>
JB-7	<i>Chevron</i>		1989			1666-1679	<i>FWHP</i>	<i>BB20</i>
JB-8	<i>Chevron</i>		1989			1362-1370	<i>FWHP</i>	<i>BB50, BB60</i>
Field : Kailas Tila								
KTL-1	<i>SGFL</i>		1962	<i>June, 1983</i>	<i>12417</i>	<i>0</i>	<i>SIWHP</i>	
KTL-2	<i>SGFL</i>		1962	<i>Feb, 1995</i>		<i>2225-2230</i>	<i>FWHP</i>	
KTL-3	<i>SGFL</i>		1962	<i>March, 1995</i>		<i>2470-2495</i>	<i>FWHP</i>	
KTL-4	<i>SGFL</i>		1962	<i>March, 1997</i>		<i>2360-2410</i>	<i>FWHP</i>	
KTL-5	<i>SGFL</i>		1962	<i>Sep, 2006</i>		<i>0</i>	<i>SIWHP</i>	
KTL-6	<i>SGFL</i>		1962	<i>Aug, 2007</i>		<i>2490-2495</i>	<i>FWHP</i>	
KTL-7	<i>SGFL</i>		1962			<i>0</i>	<i>SIWHP</i>	
Field : Kamta								
Kamta-1	<i>BGFCL</i>	<i>Vertical</i>	1981	<i>july,1982</i>	<i>11857</i>			<i>N/A</i>
Field : Meghna								
M-1	<i>BGFCL</i>	<i>Vertical</i>	2004	<i>july,1990</i>	<i>10069</i>	<i>1400-1450</i>	<i>FWHP</i>	<i>A,E,F & G</i>
Field : Moulavi Bazar								
MV Bazar-2	<i>Chevron</i>		1997			<i>800-820</i>	<i>FWHP</i>	<i>BB70</i>
MV Bazar-3	<i>Chevron</i>		1997			<i>800-820</i>	<i>FWHP</i>	<i>BB70</i>
MV Bazar-4	<i>Chevron</i>		1997			<i>946-952</i>	<i>FWHP</i>	<i>BB20</i>
MV Bazar-5	<i>Chevron</i>		1997			<i>0</i>	<i>SIWHP</i>	<i>BB60</i>
MV Bazar-6	<i>Chevron</i>		1997			<i>822-890</i>	<i>FWHP</i>	<i>BB20</i>
MV Bazar-7	<i>Chevron</i>		1997			<i>844-901</i>	<i>FWHP/SIWHP</i>	<i>BB20</i>
MV Bazar-9	<i>Chevron</i>		1997			<i>0</i>	<i>SIWHP</i>	<i>BB46, BB48, BB60</i>
Field : Narshingdi								
N-1	<i>BGFCL</i>	<i>vertical</i>	1990	<i>october,1990</i>	<i>11320</i>	<i>1143-1197</i>	<i>FWHP</i>	<i>BL</i>
N-2	<i>BGFCL</i>	<i>vertical</i>	1990	<i>february,2007</i>	<i>10778</i>	<i>1015-1097</i>	<i>FWHP</i>	<i>BL</i>
Field : Rashidpur								
RP-1	<i>SGFL</i>		1960			<i>1290-1291</i>	<i>FWHP</i>	<i>Upper</i>
RP-2	<i>SGFL</i>		1960			<i>73</i>	<i>SIWHP</i>	<i>Lower</i>
RP-3	<i>SGFL</i>		1960			<i>1548-1568</i>	<i>FWHP</i>	<i>Lower</i>
RP-4	<i>SGFL</i>		1960			<i>1450-1655</i>	<i>FWHP</i>	<i>Lower</i>
RP-5	<i>SGFL</i>		1960			<i>2291</i>	<i>SIWHP</i>	<i>Lower</i>
RP-6	<i>SGFL</i>		1960			<i>870</i>	<i>SIWHP</i>	<i>A</i>

Conditions of Field and Well upto May 2019



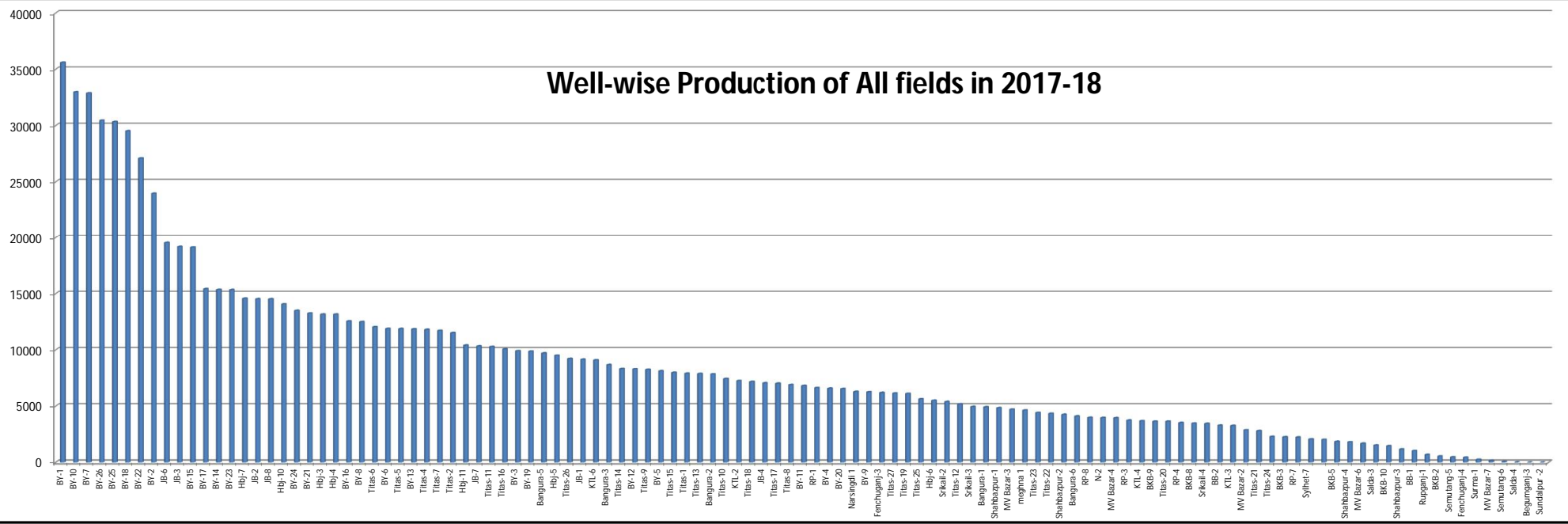
Well	company	well type	Discovery	production start	Drilled depth (ft)	Pressure	Pressure type	Completion Zone
RP-7	SGFL		1960			1308-1338	FWHP	Lower
RP-8	SGFL		1960			1600-1625	FWHP	Upper
Field : Salda Nadi								
Salda-1	BAPEX		1995					
Salda-2	BAPEX		1995					
Salda-3	BAPEX	Directional	1995	February, 2012		639-640, 698-700		Upper/Lower
Salda-4	BAPEX		1995					
Field : Sangu								
Sangu-1	BGFCL		1996					
Sangu-3z	BGFCL		1996					
Sangu-4	BGFCL		1996					
Sangu-5	BGFCL		1996					
Sangu-7	BGFCL		1996					
Sangu-8	BGFCL		1996					
Sangu-9	BGFCL		1996					
Sangu-10	BGFCL		1996					
Sangu-11	BGFCL		1996					
Field : Semutang								
Semutang-5	BAPEX		1967			280-508		Lower Zone
Semutang-6	BAPEX		1967			750-1302		
Field : Shahbazpur								
Shahbazpur-1	BAPEX		1995	May, 2009		2310-3543		Lower Zone
Shahbazpur-2	BAPEX		1995			3541-4133		Lower Zone
Shahbazpur-3	BAPEX		1995			4300		Upper Zone
Shahbazpur-4	BAPEX		1995			4250		Upper Zone
Field : Srikail								
Srikail-2	BAPEX		2012			990-1016		Upper & Lower D
Srikail-3	BAPEX		2012			981-1043		Upper & Lower D
Srikail-4	BAPEX		2012			1018-1068		Upper & Lower D
Field : Sundalpur								
Sundalpur -1	BAPEX		2011					
Sundalpur -2	BAPEX		2011					
Field : Sylhet								
Sylhet-3	SGFL		1955	Aug, 1958				
Sylhet-6	SGFL		1955	Aug, 1964		800-850	SIWHP	
Sylhet-7	SGFL		1955	Apr, 2005		1750-1820	FWHP	Lower Bokabil

Conditions of Field and Well upto May 2019

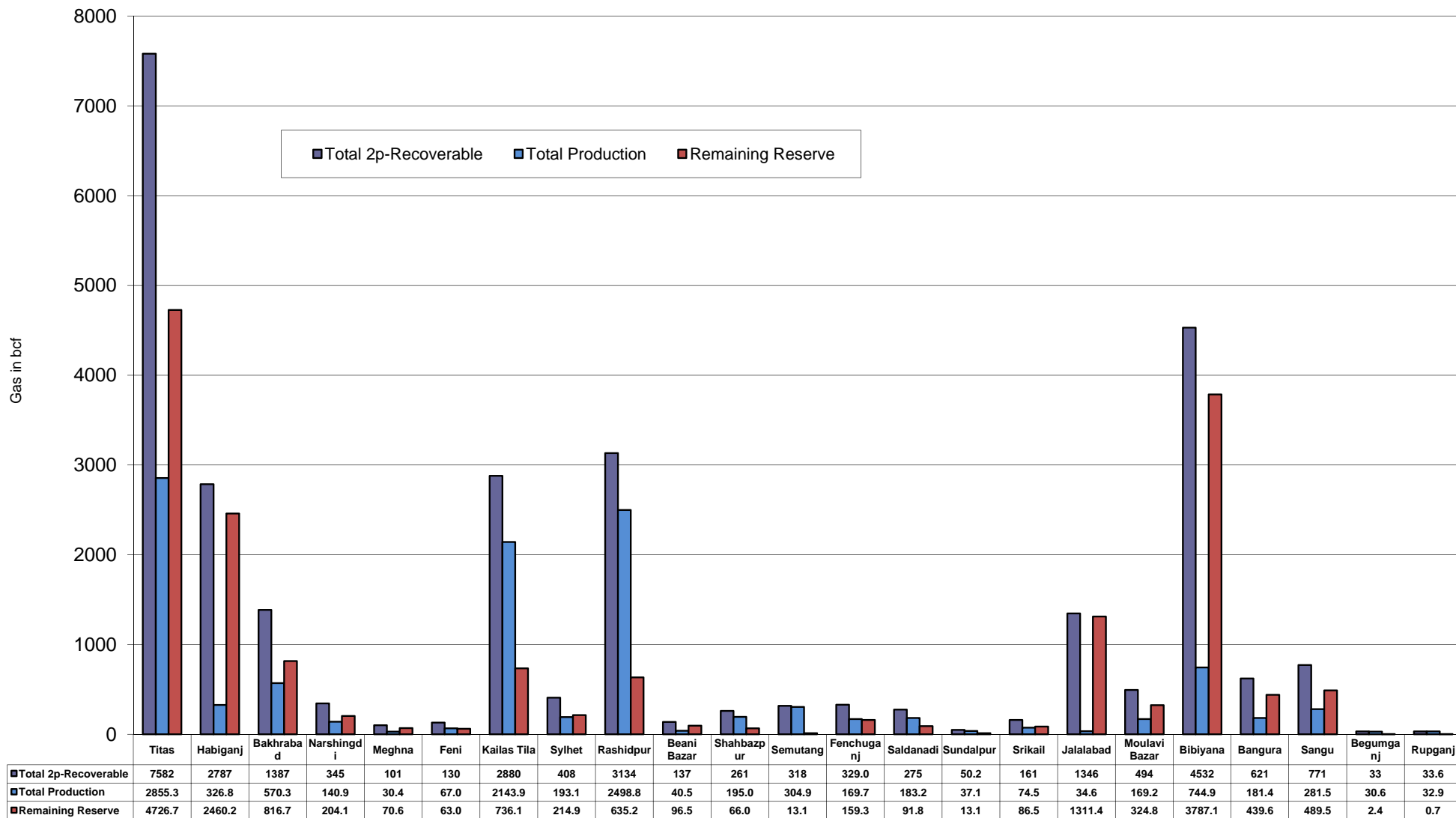


Well	company	well type	Discovery	production start	Drilled depth (ft)	Pressure	Pressure type	Completion Zone
Surma-1	SGFL		1955	June, 2010		230	SIWHP	C & D
Field : Titas								
Titas-1	BGFCL	vertical	1962	Mar, 1969	12325	900-925	FWHP	A
Titas-2	BGFCL	vertical	1962	Fen, 1969	10574	960-1020	FWHP	A
Titas-3	BGFCL	vertical	1962	sept, 1969	9315	0	FWHP	A
Titas-4	BGFCL	vertical	1962	oct, 1969	9350	1020-1070	FWHP	A
Titas-5	BGFCL	Directional	1962	jan, 1981	10805	990-1035	FWHP	A
Titas-6	BGFCL	vertical	1962	Feb, 1984	10072	1195-1225	FWHP	A
Titas-7	BGFCL	Directional	1962	July, 1985	11006	1090-1160	FWHP	A
Titas-8	BGFCL	Directional	1962	sept, 1985	11760	1000-1030	FWHP	B & C
Titas-9	BGFCL	Directional	1962	jan, 1988	11893	1040-1085	FWHP	B & C
Titas-10	BGFCL	Directional	1962	may, 1988	12139	1140-1180	FWHP	A
Titas-11	BGFCL	vertical	1962	Jun, 1991	10462	1275-1310	FWHP	A
Titas-12	BGFCL	Directional	1962	July, 2002	9873	1465-1500	FWHP	A
Titas-13	BGFCL	Directional	1962	June, 2000	11487	1085-1115	FWHP	A
Titas-14	BGFCL	Directional	1962	June, 2000	11004	1200-1250	FWHP	A
Titas-15	BGFCL	vertical	1962	may, 2006	10446	0	FWHP	A
Titas-16	BGFCL	Directional	1962	dec, 2005	11673	1205-1225	FWHP	A
Titas-17	BGFCL	vertical	1962	feb, 2013	9424	1145-1175	FWHP	A
Titas-18	BGFCL	Directional	1962	august, 2013	10932	1165-1190	FWHP	A
Titas-19	BGFCL	Directional	1962	may, 2014	12730	1365-1415	FWHP	A
Titas-20	BGFCL	Directional	1962	oct, 2013	11585	1370-1440	FWHP	A
Titas-21	BGFCL	Directional	1962	dec, 2013	11631	1260-1285	FWHP	A
Titas-22	BGFCL	Directional	1962	march, 2014	11926	990-1025	FWHP	A
Titas-27	BGFCL	Directional	1962	april, 2014	10292	1245-1265	FWHP	A
Titas-23	BGFCL	Directional	1962	feb, 2017	11988	2265-2340	FWHP	C
Titas-24	BGFCL	Directional	1962	oct, 2016	12686	1120-1245	FWHP	C
Titas-25	BGFCL	vertical	1962	march, 2016	11680	1300-1340	FWHP	A
Titas-26	BGFCL	Directional	1962	july, 2016	12618	1840-1875	FWHP	C
Field : Begumganj								
Begumganj-3	BAPEX		1977					
Field : Rupganj								
Rupganj-1	BAPEX		2014			38-88		

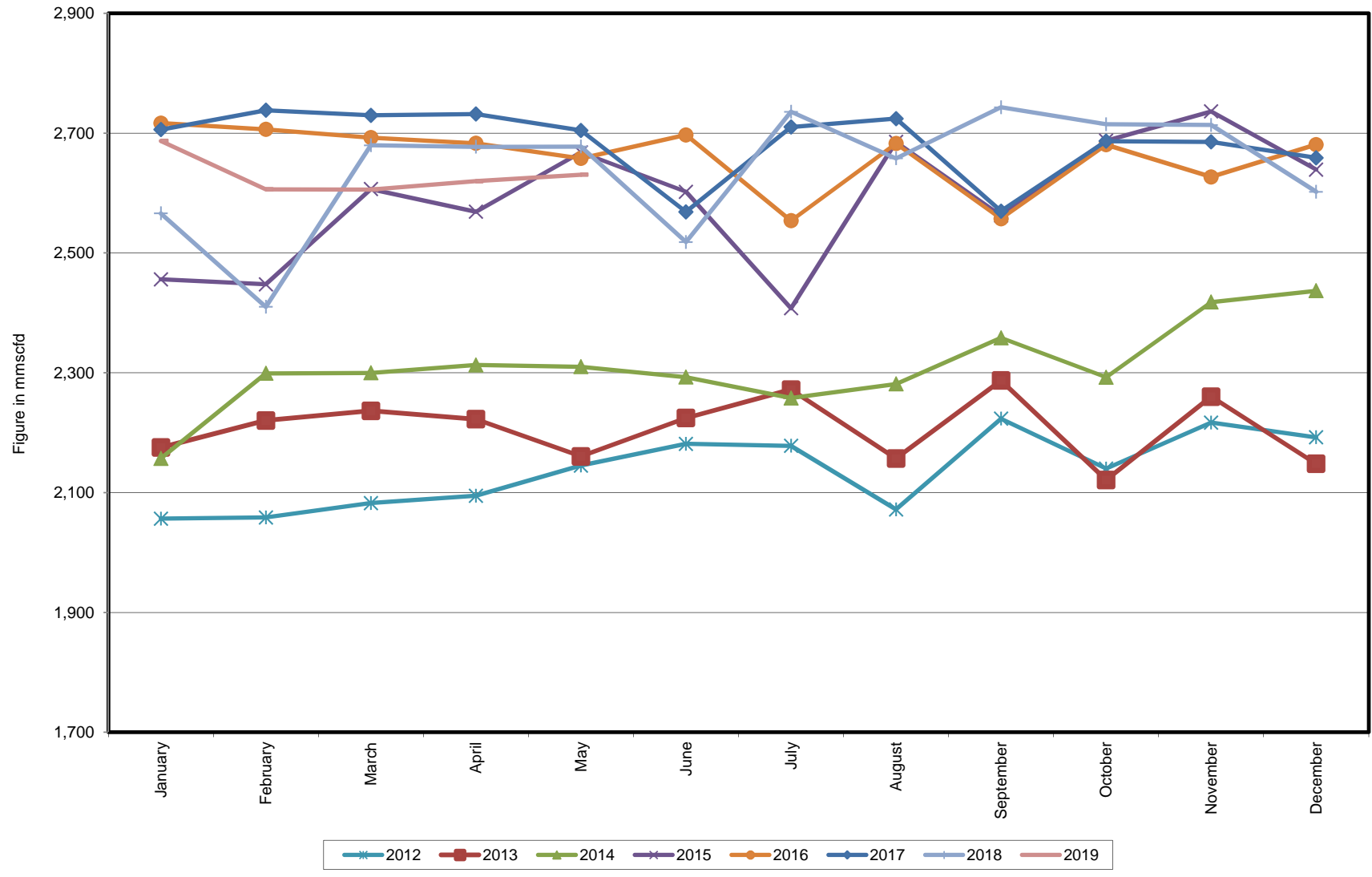
Well-wise Production of All fields in 2017-18



Reserve, Production and Remaining Reserve as of May 2019



Daily Avg. Production From January 2012 to May 2019



Field Wise Daily Avg. Production May 2019

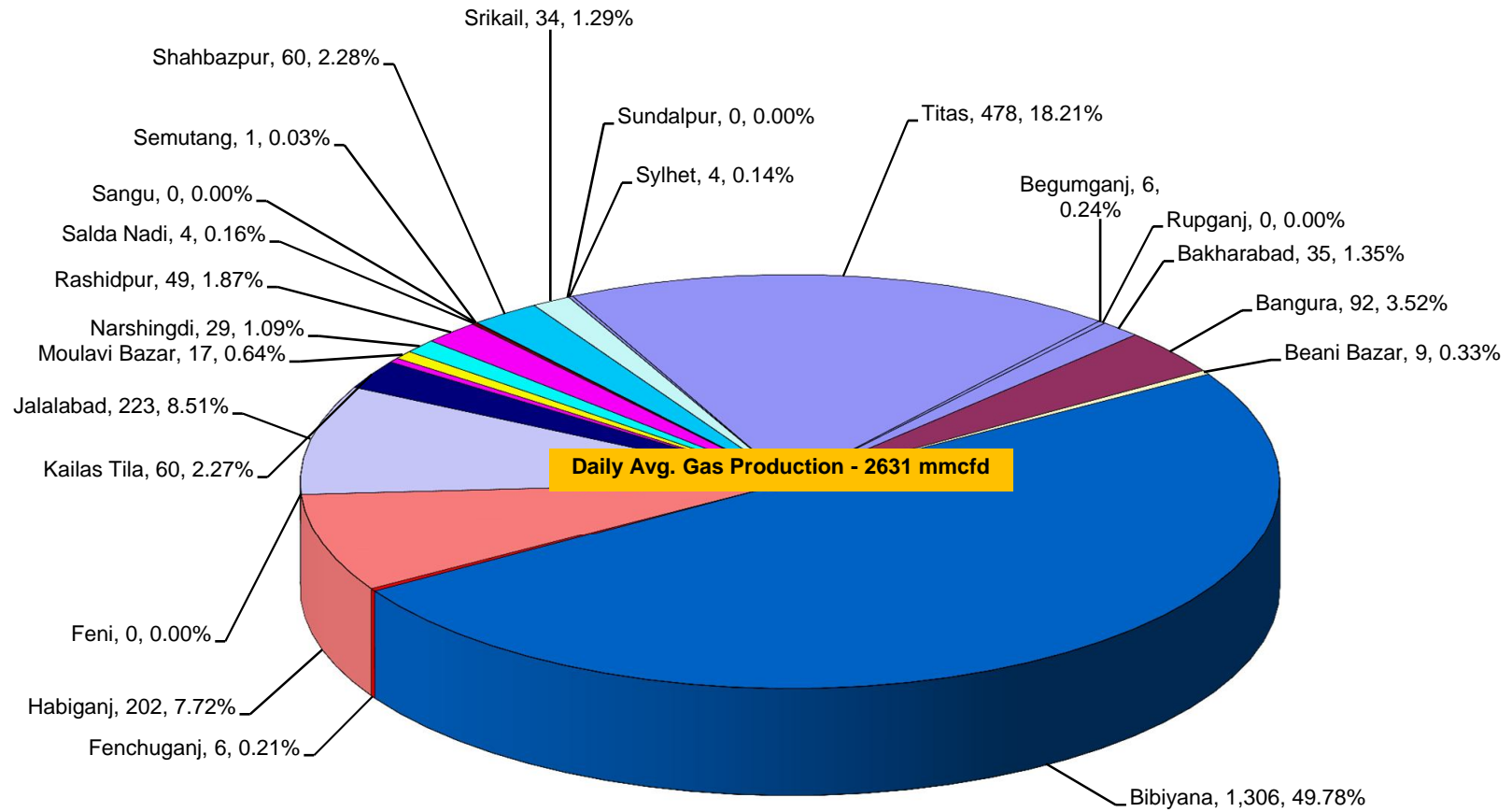
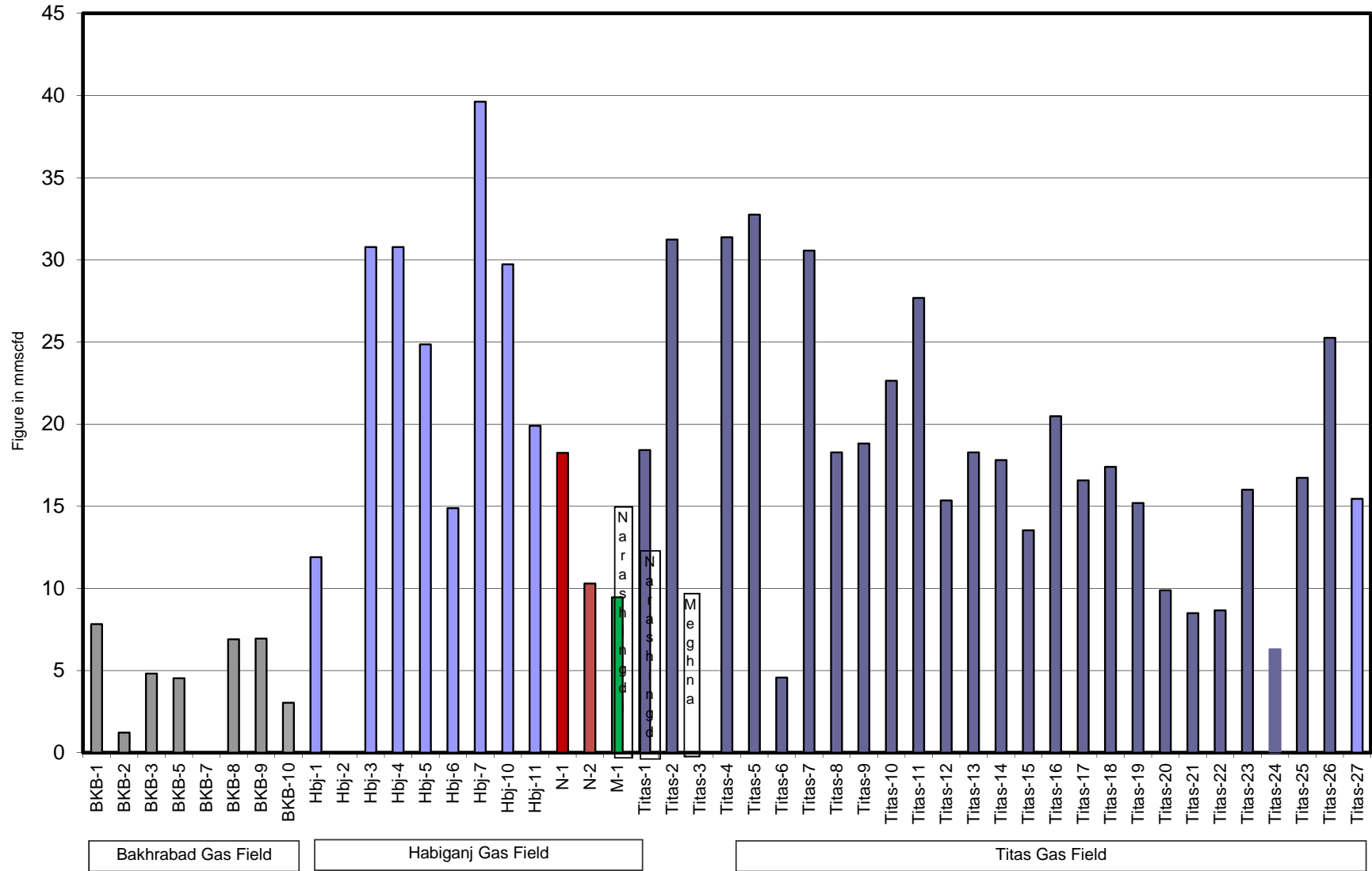


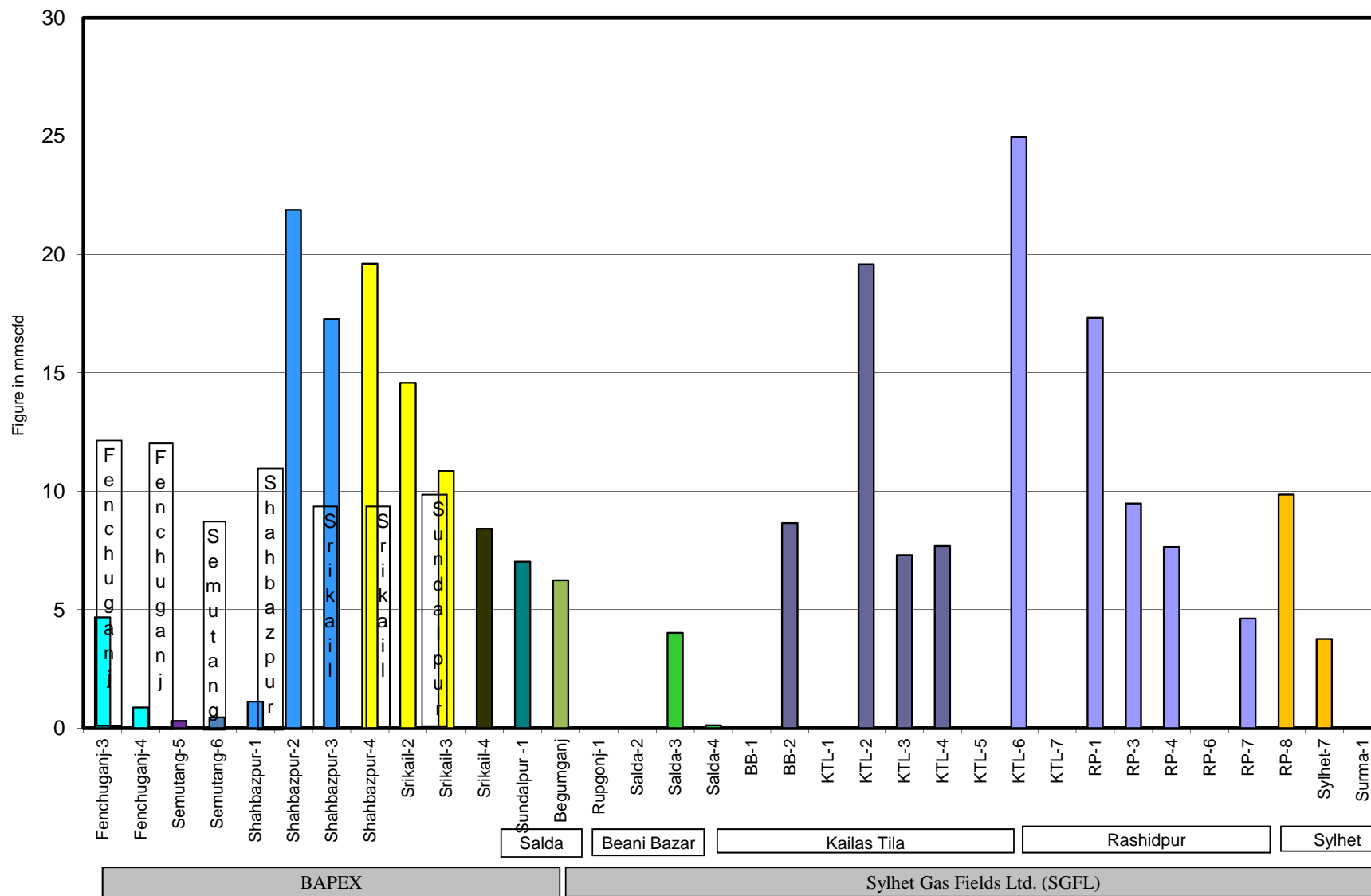
Figure in mmcfd
and % of total production

Wellwise Daily Avg. Production- BGFCL May 2019

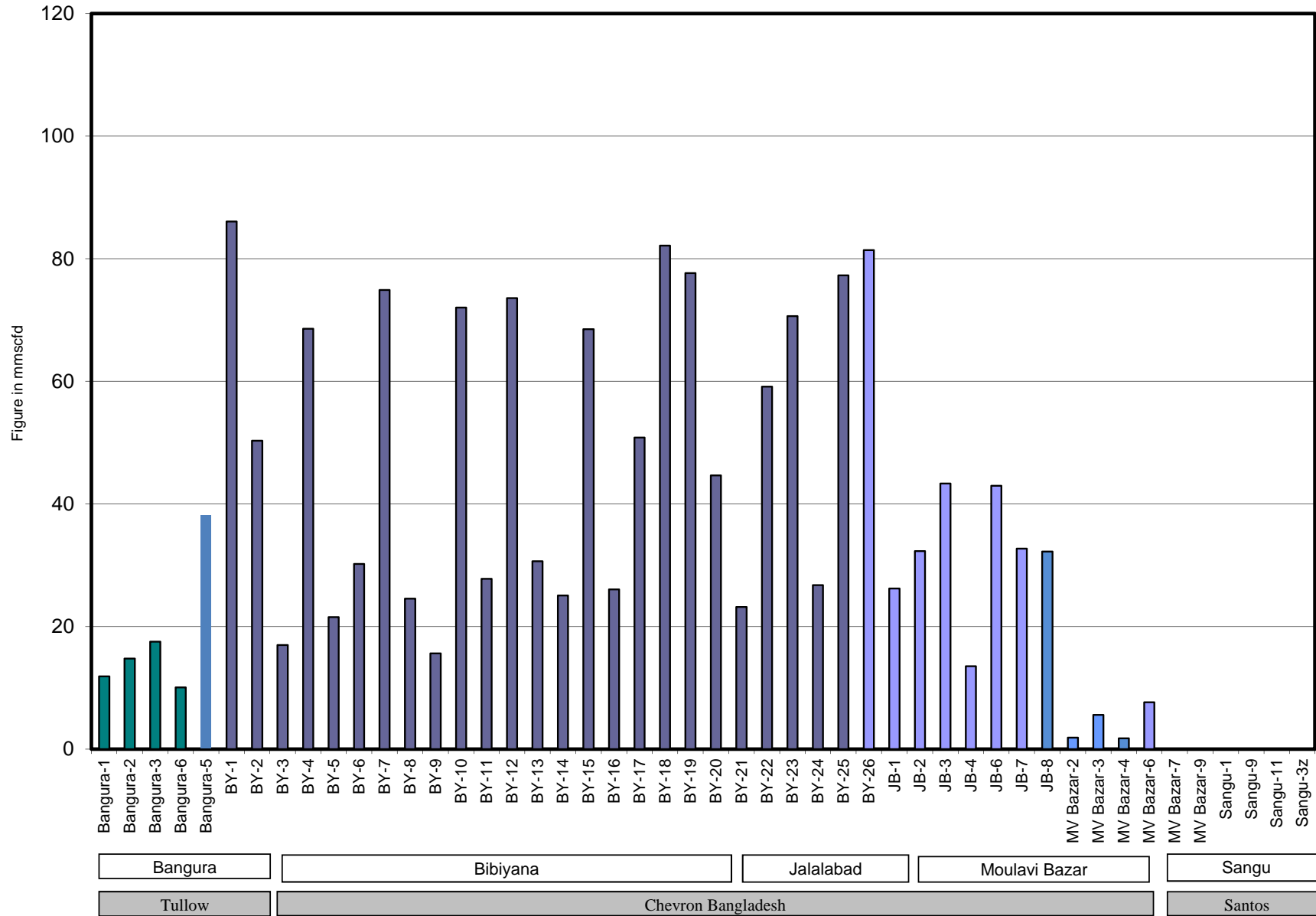


Bangladesh Gas Fields Co. Ltd. (BGFCL)

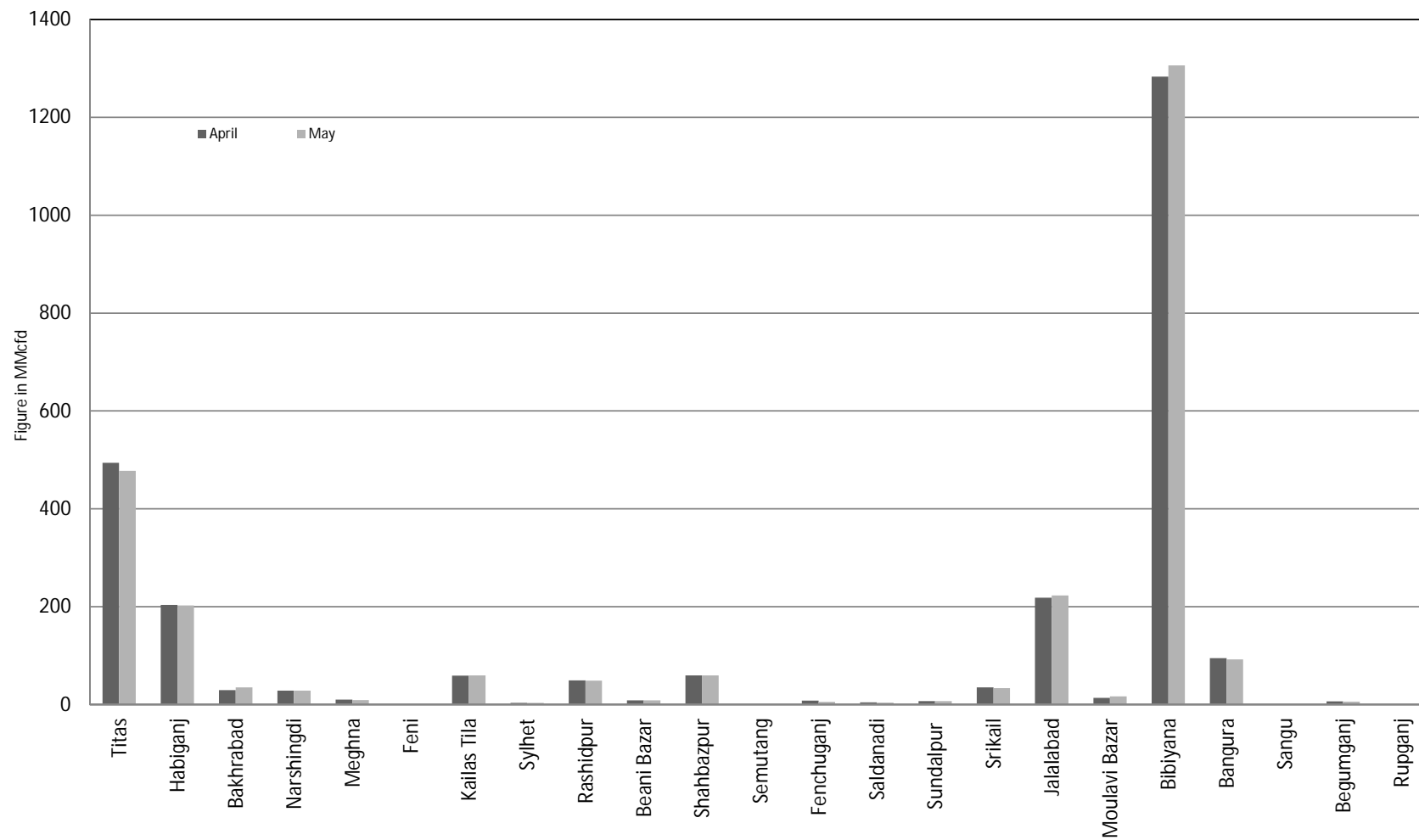
Wellwise Daily Avg. Production- Bapex and SGFL May 2019



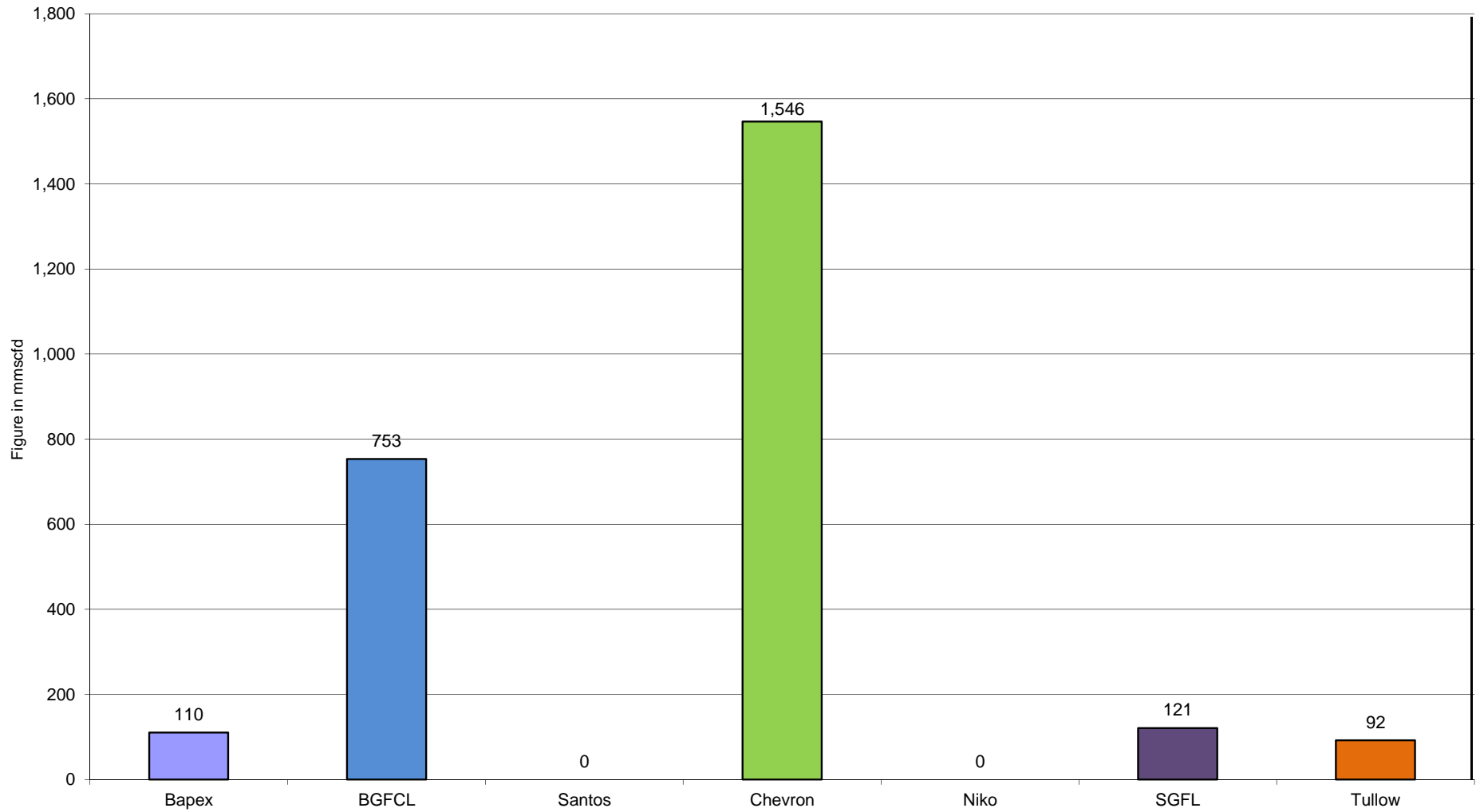
Wellwise Daily Avg. Production- IOC and JVA May 2019



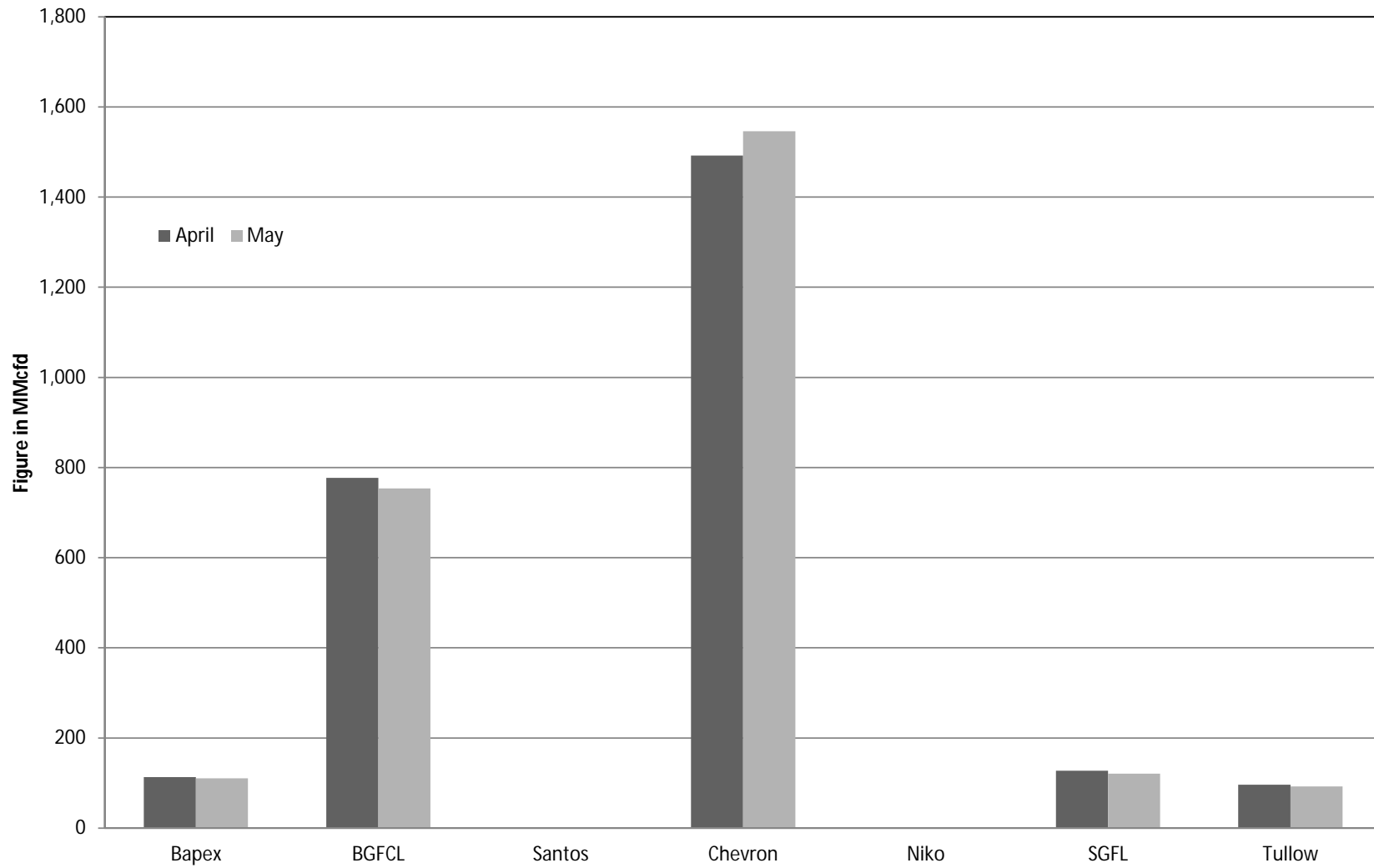
Comparison of fieldwise daily avg. Gas production between April 2019 & May 2019



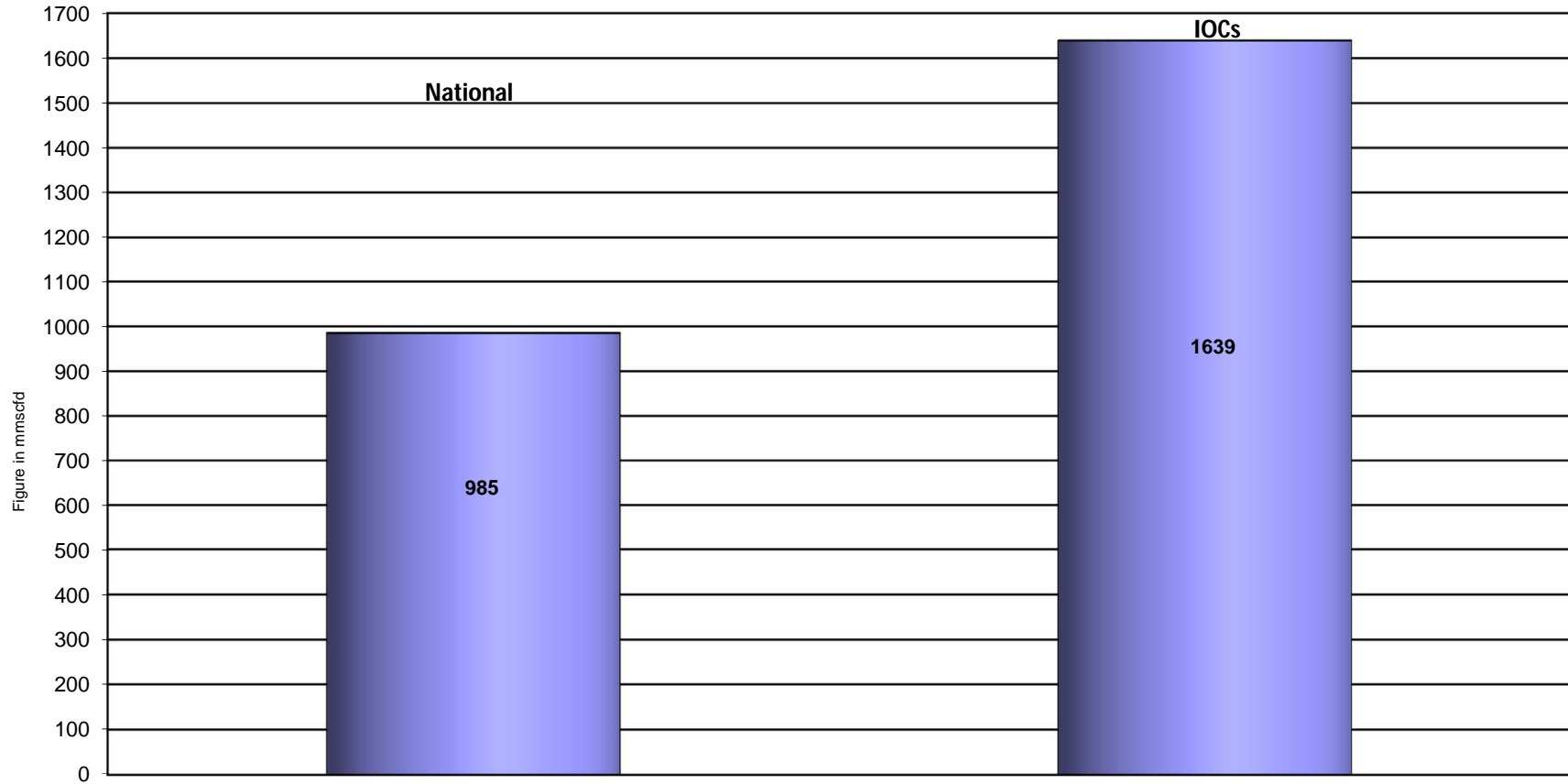
Daily Avg. Production by Operators May 2019



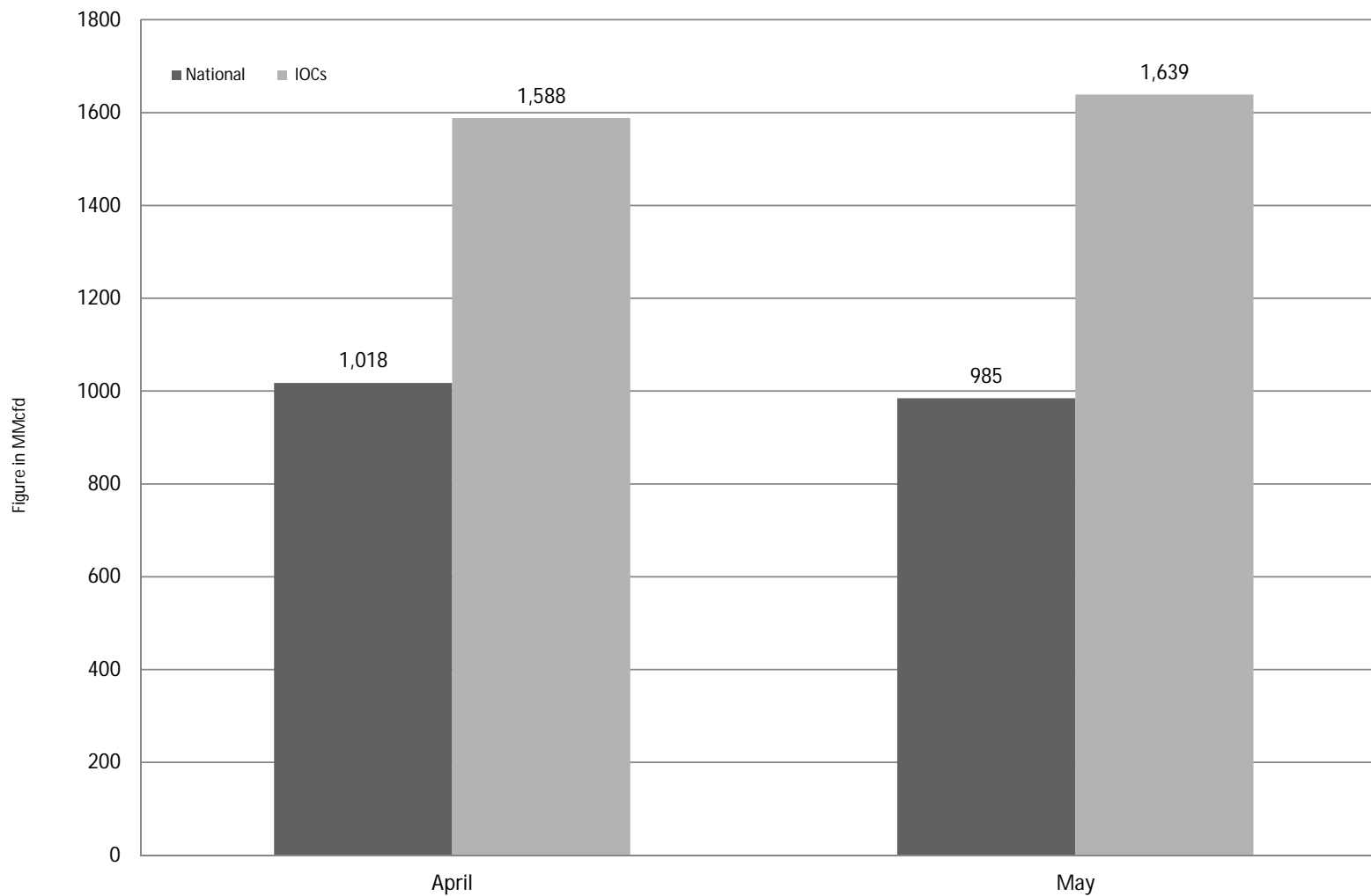
Comparison of operatorwise daily avg. Gas production between April 2019 & May 2019



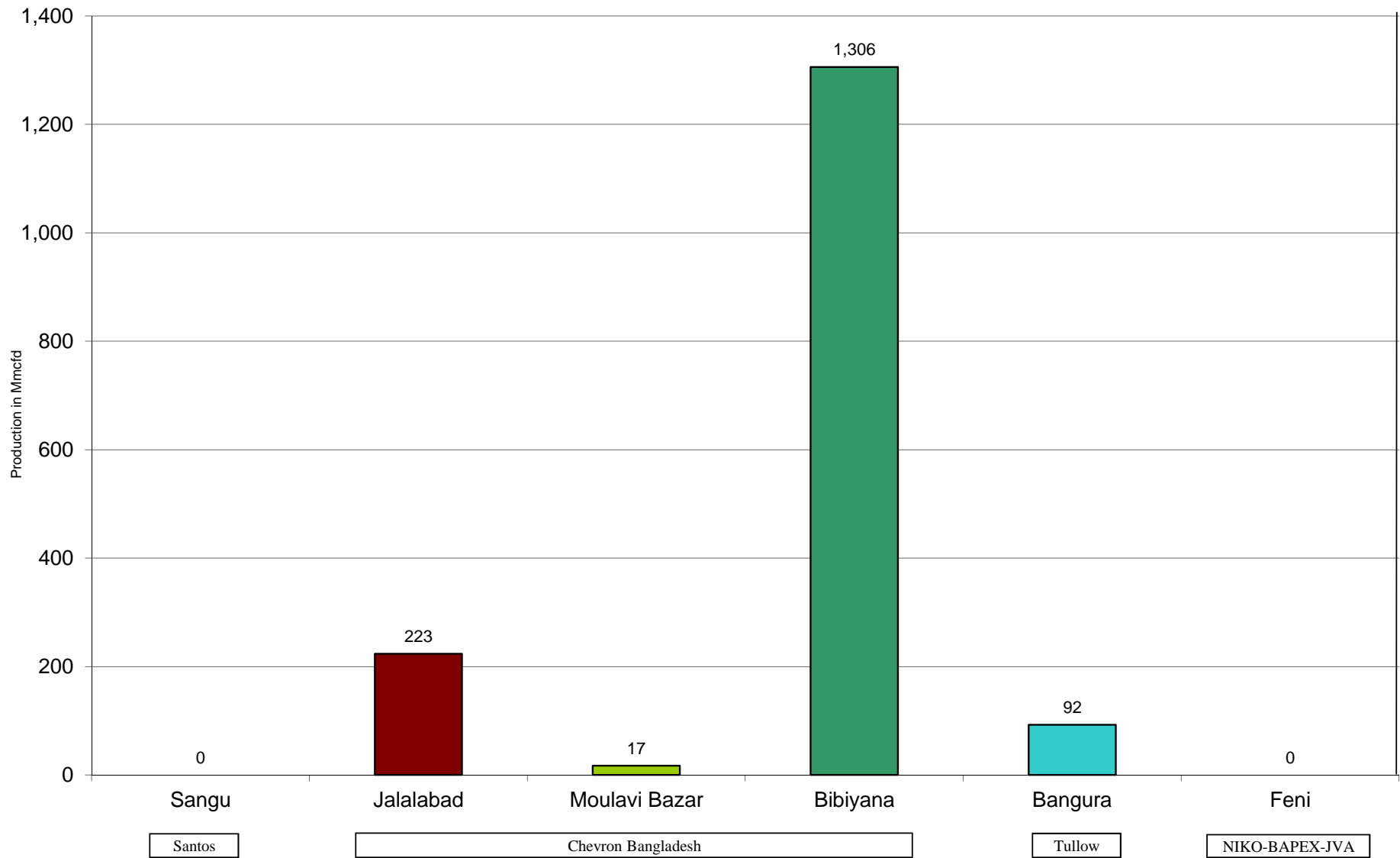
Daily Avg. Production - National Vs. IOCs May 2019



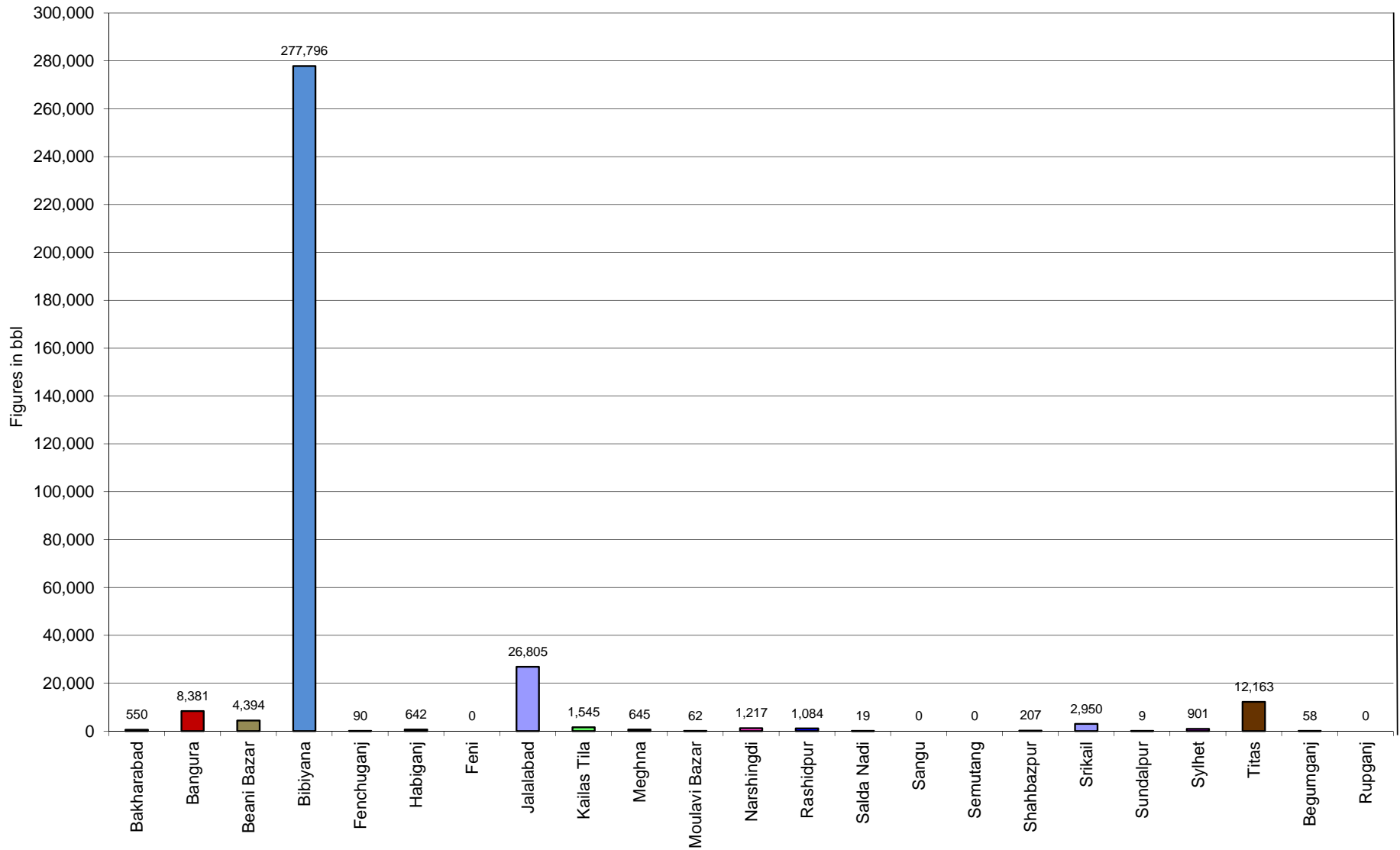
Comparison of daily avg. Gas production - National vs IOC's between April 2019 & May 2019



Daily Avg. Production - IOC and JVA May 2019



Monthly Condensate Production May 2019



Field wise Coal Reserve in Bangladesh

SI No.	Coal Basins	Proved (Mt)	Indicated (Mt)	Inferred (Mt)	Total (Mt)
1	Barapukuria	114.32	211.33	21.06+(43-64)*	346.71+(43-64)*
2	Phulbari	288	226	58	572
3	Khalashpir	-	297.57	225.92	523.49
4	Jamalganj	-	-	1053.9	1053.9
5	Dighipara	-	105	495	600
	Total	402.32	839.9	1896.88-1917.88	3139.10-3160.10

**Resources of VI Seam in second syncline are towards SW of main basin, after Wardell Armstrong*

NOTE: Reserve Figure based on Coal Sector Development Strategy (Final), HCU, PwC

Summary of Reserve and Production of Barapukuria Coal Mine As of 30 May 2019

Coal Initially Place (Proven + Probable)	346,710 kT	346.71 MT
Total Reserve of Seam VI	285,410 kT	285.41 MT
Recoverable from Seam VI Central part(Proven + Probable)	16,540 kT*	16.54 MT
Coal Production in May 2019	136.00 kT	0.14 MT
Cumulative Production as of May 2019	10,618 kT	10.62 MT
Remaining Reserve	5,922 kT	5.92 MT

NOTE: Reserve figure based on Mines and Minerals Development Report ,HCU PwC

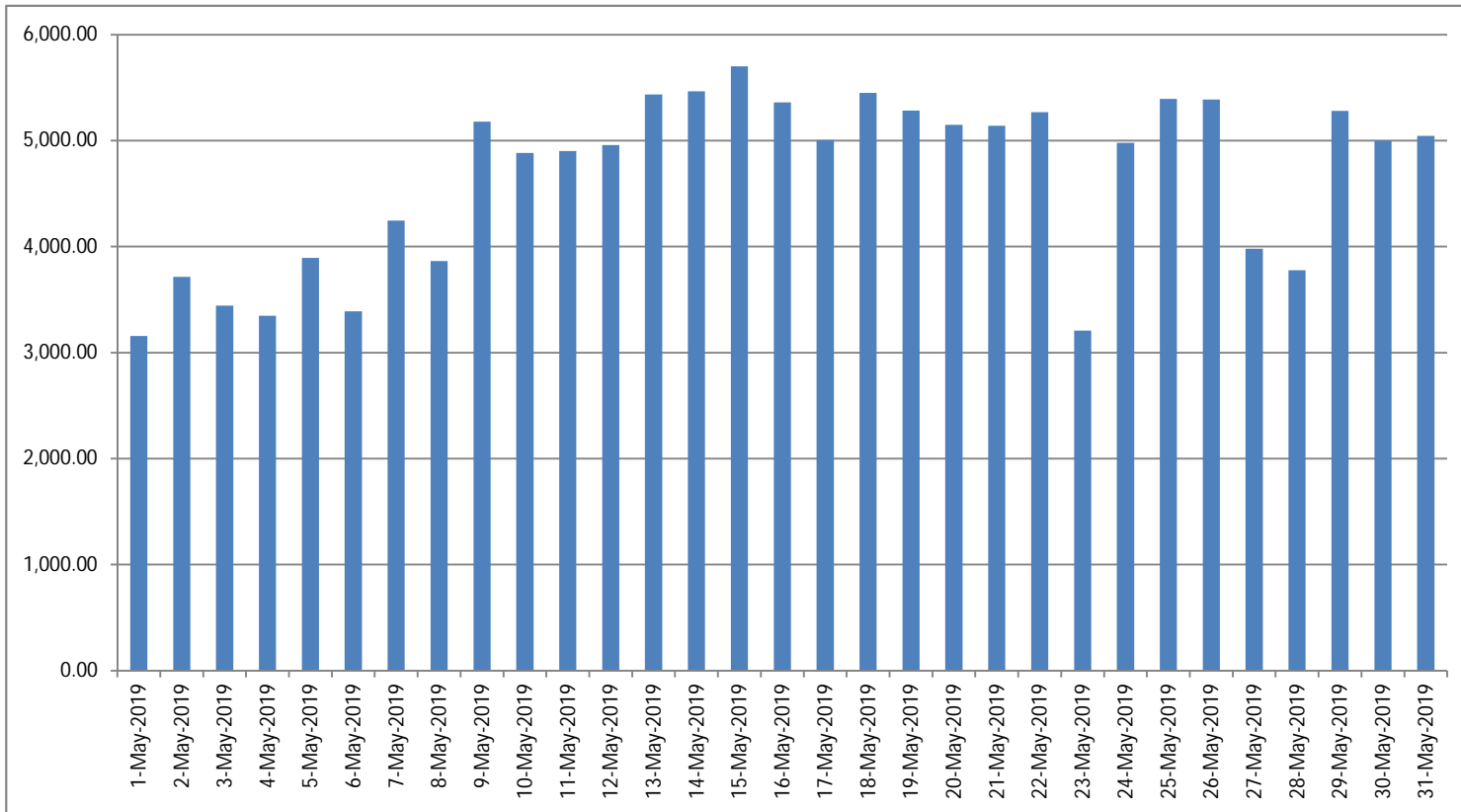
**Figure from BCMCL, M/S Wardell Armstrong. According to Mines and Minerals Development Report ,HCU, PwC this figure is 64.8 Mt*

Barapukuria Coal Mine-MPM and P Contract (BCMCL)
Measurement Record: Surface Belt Weigher
Measurement Period: May 2019

Day wise data	Consortium Daily Output (ton)	Consortium Cumulative Total	BCMCL Daily Output	BCMCL Cumulative Total	Remarks
1-May-2019	3,158.50	3,158.50	3,158.50	3,158.50	
2-May-2019	3,715.75	6,874.25	3,715.75	6,874.25	
3-May-2019	3,444.75	10,319.00	3,444.75	10,319.00	
4-May-2019	3,347.25	13,666.25	3,347.25	13,666.25	
5-May-2019	3,894.00	17,560.25	3,894.00	17,560.25	
6-May-2019	3,390.25	20,950.50	3,390.25	20,950.50	
7-May-2019	4,246.00	25,196.50	4,246.00	25,196.50	
8-May-2019	3,865.50	29,062.00	3,865.50	29,062.00	
9-May-2019	5,179.25	34,241.25	5,179.25	34,241.25	
10-May-2019	4,882.75	39,124.00	4,882.75	39,124.00	
11-May-2019	4,901.00	44,025.00	4,901.00	44,025.00	
12-May-2019	4,959.50	48,984.50	4,959.50	48,984.50	
13-May-2019	5,434.75	54,419.25	5,434.75	54,419.25	
14-May-2019	5,464.75	59,884.00	5,464.75	59,884.00	
15-May-2019	5,700.25	65,584.25	5,700.25	65,584.25	
16-May-2019	5,362.25	70,946.50	5,362.25	70,946.50	
17-May-2019	5,006.00	75,952.50	5,006.00	75,952.50	
18-May-2019	5,450.75	81,403.25	5,450.75	81,403.25	
19-May-2019	5,284.00	86,687.25	5,284.00	86,687.25	
20-May-2019	5,147.75	91,835.00	5,147.75	91,835.00	
21-May-2019	5,139.00	96,974.00	5,139.00	96,974.00	
22-May-2019	5,267.50	102,241.50	5,267.50	102,241.50	
23-May-2019	3,208.00	105,449.50	3,208.00	105,449.50	
24-May-2019	4,979.50	110,429.00	4,979.50	110,429.00	
25-May-2019	5,392.75	115,821.75	5,392.75	115,821.75	
26-May-2019	5,388.25	121,210.00	5,388.25	121,210.00	
27-May-2019	3,979.75	125,189.75	3,979.75	125,189.75	
28-May-2019	3,777.25	128,967.00	3,777.25	128,967.00	
29-May-2019	5,279.25	134,246.25	5,279.25	134,246.25	
30-May-2019	5,000.50	139,246.75	5,000.50	139,246.75	
31-May-2019	5,044.75	144,291.50	5,044.75	144,291.50	

less Difference in Water Content:	7861.47
Less Out of Seam dilution:	425.72
Output (tons) measured by Belt	136,004.31
Tonnes mined in DARR	0
Net Output after removing DARR	136,004.31

Barapukuria Coal Mine Daywise Data Graph for May 2019



আসুন, যানবাহনসমূহকে অটোগ্যাসে রূপান্তর করি...

জাতীয় সম্পদ প্রাকৃতিক গ্যাস সাশ্রয় করি...

facebook

"Energy misused, cannot be excused"

আমাদের ঘরে যদি এখনো কয়েল স্টার্টার যুক্ত টিউবলাইট থেকে থাকে, আসুন আজই LED টিউবলাইট দ্বারা প্রতিস্থাপন করি।

HYDROCARBON UNIT ON FACEBOOK

“আসুন আমাদের জাতীয় সম্পদ প্রাকৃতিক গ্যাস সাশ্রয় করি”

১। **LPG** ব্যবহার করুন..

অবৈধ গ্যাস সংযোগ থেকে বিরত থাকুন

২। **CNG** নয়, অকটেন দিয়ে গাড়ি চালান...

গাড়ির ইঞ্জিনের আয়ুষ্কাল বাড়ান

চলুন আজই যানবাহনসমূহ AUTO GAS (LPG) এ রূপান্তর করি...

- * CNG এর তুলনায় LPG কনভারশনে ৫০% কম খরচ হয়
- * ৩-৫ মিনিটে ট্যাংকে ফুয়েল ভর্তি হয়, লম্বা লাইনে দাঁড়িয়ে অপেক্ষা করার প্রয়োজন পরে না
- * CNG এর তুলনায় সিলিন্ডারে জায়গা, ওজন ও প্রেশার কম দরকার
- * রক্ষণাবেক্ষণের খরচ কম
- * পেট্রলের তুলনায় AUTO GAS -এ খরচ প্রায় ৫০% কম
- * গ্যাসোলিন ও ডিজেলের তুলনায় নিঃসরণ কম

Hydrocarbon Unit

Energy & Mineral Resources Division
Ministry of Power, Energy & Mineral Resources
153, Pioneer Road
Segunbagicha, Dhaka-1000
www.hcuro.gov.bd